

Алматы (7273)495-231
Ангарск (3955)60-70-56
Архангельск (8182)63-90-72
Астрахань (8512)99-46-04
Барнаул (3852)73-04-60
Белгород (4722)40-23-64
Благовещенск (4162)22-76-07
Брянск (4832)59-03-52
Владивосток (423)249-28-31
Владикавказ (8672)28-90-48
Владимир (4922)49-43-18
Волгоград (844)278-03-48
Вологда (8172)26-41-59
Воронеж (473)204-51-73
Екатеринбург (343)384-55-89

Иваново (4932)77-34-06
Ижевск (3412)26-03-58
Иркутск (395)279-98-46
Казань (843)206-01-48
Калининград (4012)72-03-81
Калуга (4842)92-23-67
Кемерово (3842)65-04-62
Киров (8332)68-02-04
Коломна (4966)23-41-49
Кострома (4942)77-07-48
Краснодар (861)203-40-90
Красноярск (391)204-63-61
Курск (4712)77-13-04
Курган (3522)50-90-47
Липецк (4742)52-20-81

Магнитогорск (3519)55-03-13
Москва (495)268-04-70
Мурманск (8152)59-64-93
Набережные Челны (8552)20-53-41
Нижний Новгород (831)429-08-12
Новокузнецк (3843)20-46-81
Ноябрьск (3496)41-32-12
Новосибирск (383)227-86-73
Омск (3812)21-46-40
Орел (4862)44-53-42
Оренбург (3532)37-68-04
Пенза (8412)22-31-16
Петрозаводск (8142)55-98-37
Псков (8112)59-10-37
Пермь (342)205-81-47

Ростов-на-Дону (863)308-18-15
Рязань (4912)46-61-64
Самара (846)206-03-16
Санкт-Петербург (812)309-46-40
Саратов (845)249-38-78
Севастополь (8692)22-31-93
Саранск (8342)22-96-24
Симферополь (3652)67-13-56
Смоленск (4812)29-41-54
Сочи (862)225-72-31
Ставрополь (8652)20-65-13
Сургут (3462)77-98-35
Сыктывкар (8212)25-95-17
Тамбов (4752)50-40-97
Тверь (4822)63-31-35

Тольятти (8482)63-91-07
Томск (3822)98-41-53
Тула (4872)33-79-87
Тюмень (3452)66-21-18
Ульяновск (8422)24-23-59
Улан-Удэ (3012)59-97-51
Уфа (347)229-48-12
Хабаровск (4212)92-98-04
Чебоксары (8352)28-53-07
Челябинск (351)202-03-61
Череповец (8202)49-02-64
Чита (3022)38-34-83
Якутск (4112)23-90-97
Ярославль (4852)69-52-93

Россия +7(495)268-04-70 Казахстан +7(7172)727-132 Киргизия +996(312)96-26-47

<https://amphenol.nt-rt.ru/> || aox@nt-rt.ru

Amphenol

Fiber Optic Connectors



109 Series Connectors®

AFSI's line of 109 series hermaphroditic connectors offers the ultimate in flexibility and is a direct replacement for the TAC4. The 109 connector line meets or exceeds the pertinent requirements of SMPTE standard 358M on harsh environment multi-channel fiber optic connectors suitable for deployment in demanding outdoor broadcast applications, including HDTV signal transmission.



1900Elio / ABS1696 Connectors

The Amphenol Air LB France's 1900Elio series is derived from the legacy EN3545 connectors. Composite rectangular connectors offering 36 keying positions, it comes with 7 Elio® Optical termini for Aerospace applications.



32G FC SW Transceivers

The 32G FC SW transceivers are designed to be used in Fibre Channel links up to 28.05 Gb/s data rate over multimode fiber. They are compliant with FC-P1-6a, SFF-8472 Rev 12.2c, and compatible with SFF-8432b and applicable portions of SFF-8431 Rev. 4.1d. These transceivers are RoHS compliant and per Directive 2011/65/EUe.



50G SFP56 LR Transceivers

SUPPORTS 53.12Gb/s DATA RATE & LOW POWER The module is compliant with IEEE 802.3 cd, SFF-8472 Rev 12.4, and compatible with SFF-8432 and applicable portions of SFF-8431 Rev. 4.1. - Supports 53.125Gb/s data rate - 1.8W maximum power consumption with established link - Up to 10km on 9/125µm SMF - Operating temperature range: -40°C to 85°C - Electrically hot-pluggable



50G SFP56 SR Transceivers

SUPPORTS 53.125Gb/s DATA RATE & LOW POWER The module is compatible with IEEE 802.3 cd 50G SR. Maximum link length of 70m on OM3 multimode fiber or 100m on OM4 multimode fiber. - Low power - 1.5W - Mature COB technology - Outstanding BER and sensitivity - Supports 53.125Gb/s data rate - Electrically hot-pluggable



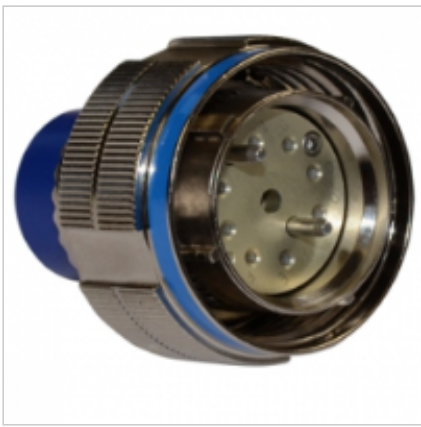
64G FC SR CDR Transceivers

SUPPORTS 57.8GB/S DATA RATE & LOW POWER The module is compatible with 64G FC-PI-7. - Low power - 1.5W - Mature COB technology - Outstanding BER and sensitivity - Supports 57.8Gb/s data rate - Electrically hot-pluggable



AMT

The AMT supports distributed split architecture, which is designed to push the PON splitters further into the network and closer to the customer's premise with multiple levels of splitting. In order to support this network architecture, Amphenol Fiber Optic Products has developed a small form factor, factory-sealed, closure, the AMT.



ARINC 801

The ARINC 801 series is perfect for aerospace and military applications and features a removable alignment sleeve retainer (ASR) for ease of termini end face cleaning, guide pins for precision alignment, and a scoop-proof shell design. It is available in standard D38999 plug and wall mount shells. Inserts are available to support 2 to 32-channels and can support both PC and APC.



ARINC 801 Fiber Optic Connectors

Amphenol offers a multi-channel circular connector that complies with the ARINC specification. This connector, available in straight plug and wall mount receptacle, uses the ARINC 801 ceramic termini.



AXOS

The Amphenol AXOS fiber optic expanded beam is a miniature, hermaphroditic, and cost-effective alternative to other expanded beam connectors, offering a robust and protected optical connection in a small size (OD 27 mm).



CF38999 Multi-Channel Fiber Optic Connector

The industry standard for Fiber Optics meets or exceeds MIL-DTL-38999 Series III requirements. Recessed pins in this 100% scoop-proof connector minimize potential termini damage. Shells of stainless steel or cadmium over nickel plating withstand 500-hour salt spray exposure. Operates under severe high-temperature vibration.



CFP 100G Transceivers

Amphenol 100G CFP/CFP2/CFP4 series optical transceivers support from 10km to 40km reach, adopt LC interface, compatible with IEEE802.3ba, MSA, and other standards. It has the characteristics of low power consumption, dual rate, and high speed. It is widely applied in large data centers, telecom, and other environments.



CONEC IP67 Fiber Optic LC Duplex Connectors

CONEC IP67 Fiber Optic LC Duplex connectors offer secure and fastest option for data transmission. Suitable for industry with standard LC interfaces according to IEC 61754-20. Protection class IP67/IP68 Available as Single Mode (SM), Multi Mode (MM) and APC Single Mode (APC-SM).



CTOL

CTOL series are robust optical connectors for the rapid deployment of high-speed transmission links under harsh environments. The hermaphroditic mating makes it possible to “daisy chain” cable assemblies without using any interconnect adapters. The specific lens design guarantees a large beam diameter and a low loss connection, less sensitivity to dirt and dust.



CTOS

CTOS series is a robust optical connector for the rapid deployment of high-speed transmission links under harsh environments. The hermaphroditic mating makes it possible to “daisy chain” cable assemblies without using any interconnect adapters. The specific lens design guarantees a large beam diameter and a low loss connection, less sensitive to dirt and dust.



CTOS

CTOS is an expanded beam fiber optic connector available in singlemode and multimode. Designed for gloved handling and blind mating in the most extreme conditions, features include up to 4 channels, a hermaphroditic design, a protective window with contactless transmission, and qualification in accordance with NATO/STANAG4290 norms.



CTOS - Expanded Beam FO Connector

Amphenol SOCAPEX CTOS is an expanded beam fiber optic connector available in singlemode and multimode. Designed for gloved handling and blind mating in the most extreme conditions, its features include up to 4 channels, a hermaphroditic design, a protective window with contactless transmission, and qualification in accordance with NATO/STANAG4290 norms.



Customized Fiber Optic Connectors

Besides our standard products Amphenol Precision Optics develops and manufactures components upon customers' specifications. The highest precision mechanical production and a high level of vertical integration enable the realization of customer-specific connectors and special designs such as FSMA connectors with special bore for laser and medical applications.



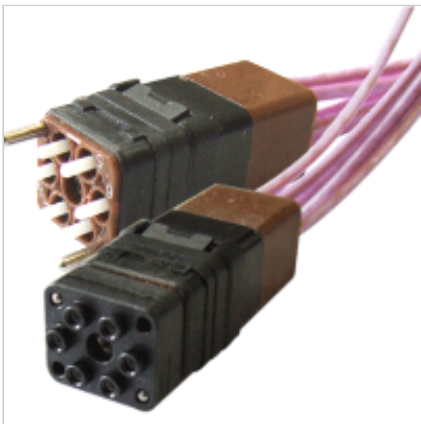
EN4165 / SIM Elio for EN4531-101 Contacts

Amphenol Air LB France offers a wide range of optical modules fitted with different standards of fiber optic termini or optical connectors. The module SIM Elio can be used with the whole range of EN4165 / SIM connectors. Modules SIM Elio are designed as per EN4701, and Lumiere or Elio optical contacts as per EN4531-101 standard



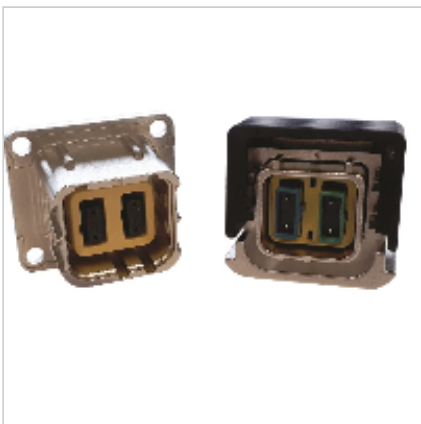
EN4165 / SIM for MPO connectors

Amphenol Air LB France offers a wide range of optical modules fitted with different standards of fiber optic termini or optical connectors. The module SIM MPO can be used with the whole range of EN4165 / SIM connectors. MTP/MPO connector directly plugs and locks itself into the module. Available from 12 to 48 fibers, Multimode, and Single mode. Easy removing for repair.



EN4165 / SIM Luxcis for ARINC 801 Contacts

Amphenol Air LB France offers a wide range of optical modules fitted with different standards of fiber optic termini or optical connectors. The module SIM Luxcis can be used with the whole range of EN4165 / SIM connectors. EN 4165/SIM/ARINC 809 compliant inserts for ARINC 801 butt joint Fiber Optics contacts.



EN4165 / SIMTac03 Optical

Amphenol Air LB France offers a wide range of optical modules fitted with different standards of fiber optic termini or optical connectors. SIMTac03 modules come with 2 MTAC Connectors with Strain Relief. Recessed MT Ferrule reduces exposure. Boots are for round or ribbon fiber. Finger-touch-proof. Available in Multi-mode & single-mode versions.



EN4165 / SIMTac08 Optical

Amphenol Air LB France offers a wide range of optical modules fitted with different standards of fiber optic termini or optical connectors. SIMTac08 modules are designed to receive 1 MT Ferrule packaged within a Size 8 Quadrax contact form factor. 2 versions are available: EN4165/M38999 cavities & Arinc 600 cavities. For boot or sealed sleeve. Multi-mode (12 optical ways)



euMicron

2 and 4 Channel connector system with smaller diameter – designed for applications where size and space requirements are critical. Very high resistance to vibration, shock, environmental effects, dust, and debris. Compatible with Tyco Pro Beam Mini & Telecast MX connectors.



Eurolens

The hermaphroditic connector allows ideal flexibility in the field. The expanded beam offers an optimal optical transmission with minimal loss and the non-contact system enables thousands of mattsings. The EUROLENS-Connector-System, available with 2, 4, 8, and 12 channels, is compatible will all MIL-DTL-83526/20 and bulkheads MIL-DTL-83526/21 connectors.



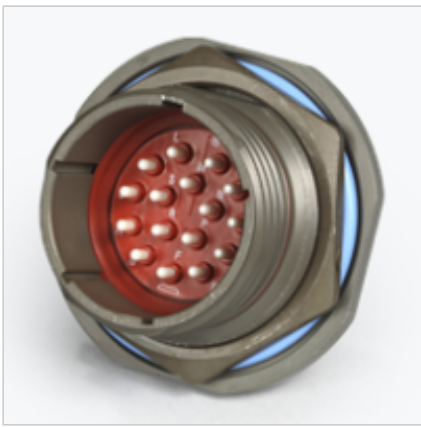
F-143 Connector

Building on the legacy of MIL-PRF-28876, the F-143 incorporates the latest technologies in fiber optic interconnect design. The backshells feature the Quickloc™ captivation system, developed by AFSI, that is easy to install, easy to remove the captivated aramid yarn of the cable, and recapture without cutting back the cable.



Fiber Optic Adapters

Amphenol LTW's offers a variety of Fiber Optics adapters that allow terminating fiber optics cables to be coupled together. Available in LC & SC type for your outdoor application for your high-speed transmission requirement.



Fiber Optic Bulkhead Feed -Through

The multi-channel fiber optic feed-through is designed to perform in demanding environments where a high degree of environmental sealing is required between bulkheads. Fully compatible with D38999 and Amphenol CF-series fiber optic connectors with size 16 fiber optic contacts. Jam nut style for easy installation.



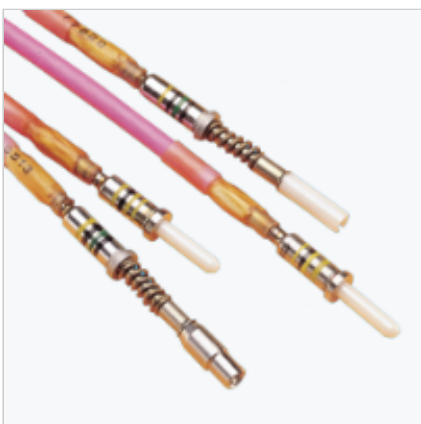
Fiber Optic Cable Assemblies

Amphenol is vertically integrated to provide fiber optic termini, connectors, and cable assemblies as a single solution. Single-mode and multi-mode cable assemblies in a variety of cable configurations, from simplex jumpers to multi-fiber custom assemblies.



Fiber Optic Pre-Assembled Cable Expanded Beam HMA

A perfect fit for applications in harsh environments - expanded beam connectors HMA. Ideally prepared for all eventualities of data transmission by IP 68 protection class connectors as well as waterproof cable. Due to contact-free transmission of the expanded beam technology, there is no abrasion of the lenses and thus no damage and wear. HMA 2, 4, 8, or 12 channel connectors available.



Fiber Optic Termini

Multiple options available for single-mode and multi-mode termini in many industry standards -- MIL-PRF-29504, ARINC 801, MT ferrules.



FiberQuad Ruggedized Quadrax Contacts

FiberQuad embeds a fiber optic transmitter or receiver within a Quadrax contact along with the support electronics to provide a plug-and-play solution. The contact fits within a standard Quadrax contact and can be installed in plugs and receptacles meant for Amphenol Quadrax D38999 connectors.



Fiber Splice

ABS offers a complete line of optical splice closures for any application as well as a range of splitters and components. With aerial, pole, wall mount, pedestal, and below-grade options, ABS fiber splice solutions are designed to be the most versatile, user-friendly, and cost-effective on the market. Flexible Fiber Splicing for More Connectivity.



Fiber to Antenna (FTTA) Interconnect Solutions

Borne from the foundation of D38999 mil-spec harsh environment connectors, the FTTA interconnect solution combines standard fiber optic LC components and copper contacts in a rugged, affordable package. The FTTA series is highly configurable to support a wide range of industrial applications where fiber and copper connectivity are required in a single connector.



FS12 Pierside 12-Channel Fiber Optic Connector

The AFSI FS12 fiber optic connector is for harsh environment, broadcast, and pierside applications with a design that provides flexibility for current and future Navy communication requirements both afloat and ashore. It is also ideal for high fiber count tactical broadcast networks with removable termini, it enables quick connector reconfiguration and field maintainability.



FS34

These connectors are precision machined to stringent tolerances and designed to provide superior optical performance in extreme environmental conditions. FS34 offers rugged military and industrial multichannel fiber optic connectors with a captivation system developed by AFSI and Quickloc™ backshells.



FSBDC Series Bayonet Duplex Connector

The FSBDC is rugged, has a tri-mating bayonet locking mechanism, and is sealed ensuring high environmental and optical performance for a variety of applications in harsh environments. The FSBDC is based on the proven Pattern 105 size 10 series of electrical connectors. The bayonet coupling offers simplistic and quick mating/de-mating. The shell material can be brass, aluminum, or marine bronze.



FSHDM Series

FSHDM is hermaphroditic which allows the daisy-chaining of cable assemblies, therefore, eliminating the need for polarising the assemblies or in-line adaptors. There is a bayonet locking mechanism, it is sealed and ensures high environmental and optical performance in a variety of applications ranging from land tactical to broadcasting applications.



GoldRush® Fiber Optic Connectors

The GoldRush® series of fiber optic connectors are innovative interconnect solutions enabling technology for “digital mining.” AFSI’s GoldRush® connectors address specific mining requirements for the future of intelligent mining and are the only Mining Safety and Health Administration (MSHA) certified fiber optic connectors for use in underground mines under Title 30 CFR, Part 18.



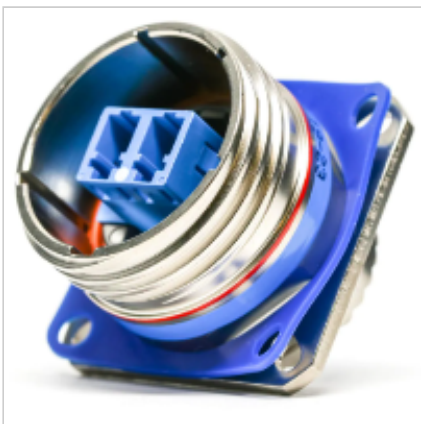
Indoor Connectors and Adapters

Amphenol offers a vast array of indoor connectors and adapters that are produced with high-quality material and meet EIA/TIA and IEC standards and RoHS compliant. Available in a wide variety of footprints, fiber capacity, fiber types, and colors.



IP-FX

The IP-FX field-installable IP67 weatherproof housing is designed as a cost-effective means of providing a removable interface for harsh environments. It allows for quick and easy installation onto cable assemblies. The IP-FX allows direct mating to edge-mounted active devices or as a sealed feed-thru to adapters or internally mounted devices. Well suited for wireless base station applications.



LC Field

The patented RJStop® system allows the use of a standard LC patch-cord in a metallic plug, which will protect it from shock, dust, and fluids. There is no need for field termination. This metallic plug connects to a receptacle, using a Tri-Start Thread coupling mechanism (MIL-DTL-38999 Series III type) with an anti-decoupling device for high vibrations.



Leap® On-Board Transceiver

SMALL, FAST AND POWER-EFFICIENT Amphenol's 300Gb/s Leap®High-Speed Optical Module is faster, smaller, and more cost and power-efficient than most conventional data center interconnects.



Lux-Beam #12

Lux Beam is a single expanded beam termini compatible with multi-source connectors (38999, EN4165, EN3645). Featuring ball lens technology with an expanded beam superior to 50X in multimode, this solution is ideal for head-up display, tactical communication, avionics communication, equipment with hybrid connection in harsh environments.



Lux-Beam #16

Lux Beam is a single expanded beam termini compatible with multi-source connectors (38999, EN4165, EN3645). Featuring ball lens technology with an expanded beam superior to 50X in multimode, this solution is ideal for head-up display, tactical communication, avionics communication, equipment with hybrid connection in harsh environments.



M83522 MIL-ST Connector

The M83522 connector is qualified for military applications and features a higher spring force than commercial ST connectors, allowing it to meet the shock requirements of MIL-DTL-83522. COTS ST connectors provide the same robustness with a spring force more consistent with commercial ST connectors, enabling them to connect effectively with other ST connectors and ancillary electronics.



Mini AMT

The Mini AMT supports distributed split architecture is designed to push the PON splitters further into the network and closer to the customer's premise with multiple levels of splitting. In order to support this network architecture, Amphenol Fiber Optic Products has developed a mini form factor, factory-sealed, closure ideal for pedestals.



MPO Field

Amphenol SOCAPEX's MPO Field solution enables users to transform a standard MPO patchcord into a robust connector designed to resist the harshest environments. The MPO patchcord is integrated into a metallic plug based on MIL-STD-38999 Series III, shell size 13 Military connector, to protect it from shocks, dust and fluids. There is no requirement for field termination.



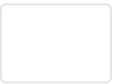
MT38999 Multi-Channel Connectors with MT Ferrules

Amphenol offers a multi-channel circular connector with high-density MT fiber optics. This connector uses MT ferrules. Ferrules are available in either 12-fiber or 24-fiber versions, in multi-mode PC, single-mode PC, and single-mode APC configurations. 2 arrangements are available -- shell size 11 with one ferrule and shell size 21 with four ferrules.



mTACH Miniature 2-Channel Fiber Optic Connector

AFSI offers a high-performance, dual-channel hermaphroditic fiber optic connector, ideally suited for the energy, broadcast, and military markets. The mTACH connector is rugged yet compact. It is designed for use in tight spaces yet durable enough for applications requiring multiple mating cycles and harsh environments.



Fiber Optic Connectors



NGCON

Amphenol Fiber Systems International (AFSI) is pleased to offer MIL-PRF-NGCON compliant fiber optic connectors with proven technology and features from existing connector standards of D38999 and 28876 for the next generation connector (NGCON). These innovative connectors include genderless contacts and high-density packaging.



Optron Hybrid DS

Amphenol Fiber Systems International (AFSI) offers the Optron line of circular, hybrid (fiber optic/ electrical) connectors using proven M28876 technology. The high-precision engineered polymer insert provides optical performance superior to that of other hybrid connectors, particularly in high channel count configurations.



OSP - AOM

ABS expands the capacity of fiber with a DWDM solution that combines simplicity, security, and reliability. The OSP-AOM along with the HiDT has been designed to handle high channel counts in a package that exploits and expands the capacity of many of the most popular OSP closures.



Promi

Promi is a miniature optical cable adaptor for reduced space. It features a compact removable splice for easy installation & maintenance, a split nut for easy installation, and a boot for sealed connection.



QSFP28 100G Transceivers

Amphenol 100G QSFP28 transceivers include SR4, CWDM4, LR4, and ER4 lite, adopt MPO or LC interface, and are compatible with IEEE802.3bm, SFF-8636, and other standards. They have the characteristics of low power consumption, small size, and high speed, and are beneficial to increasing the capacity of the data center, improving the port density, and reducing the power consumption.



QSFP+ 40G Transceivers

Amphenol provides a full range of 40G QSFP+ optical transceiver from 150m to 30km reach, adopt LC or MPO interface, and is compatible with IEEE802.3bm, SFF-8436, and other standards. It has the characteristics of low power consumption, small size, and high speed which is beneficial to increase the capacity of data centers, improve the port density and reduce power consumption.



R2CT

The R2CT field-installable IP67 weatherproof housing is designed as a cost-effective means of providing a removable interface for harsh environments. It allows for quick and easy installation onto cable assemblies. The R2CT allows direct mating to edge-mounted active devices or as a sealed feed-thru to adapters or internally mounted devices. Well suited for wireless base station applications.



Rectangular Connectors with Fiber Optic Termini

High-speed fiber optic transmission is available in rectangular connectors for use in advanced avionics systems. The optical performance of fiber optic termini is the same as termini used in circular connectors. LRM interconnects can have hybrid arrangements of fiber optics with Brush contacts, as well as other contact types.



SFP28 25G Transceivers

Amphenol 25G SFP28 optical transceiver includes SR, LR Lite, LR, ER, etc, adopt LC interface and compatible with IEEE802.3by, IEEE802.3cc, SFF-8472, and other standards. They have the characteristics of low power consumption, high speed, and high reliability. These products are mainly applied in 25G Ethernet, CPRI10, and other environments.



SFP+ 10G Transceivers

Amphenol's SFP+ 10G optical transceivers include SR, LR, ER, ZR, and support Duplex, BiDi, CWDM, and DWDM solutions. They adopt an LC interface and are compatible with IEEE802.3ae, SFF-8472, SFF-8431, and other standards. SFP+ 10G optical transceivers have the characteristics of low power consumption, small size, and high speed.



SFP Transceivers

Amphenol's SFP optical transceivers include 1.25Gb and 2.5Gb series. They support Duplex, BiDi, CWDM, and DWDM applications, and can reach various distances from 500m to 80km. These transceivers adopt an LC interface and are compatible with IEEE802.3ba, SFF 8472, SFP MSA, and other standards. They are characterized by low power consumption, small size, and high reliability.



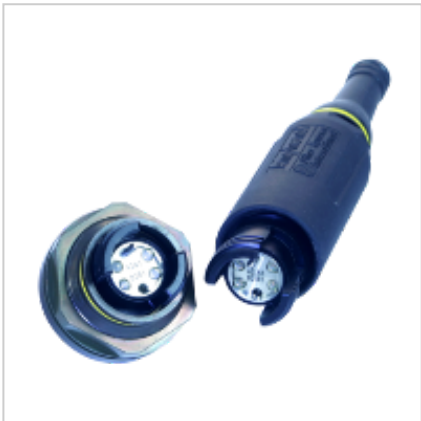
Space ST Connector

A MIL-STD-83522 style connector and strain relief boot are compliant to NASAEEE-INST-002 material guidelines for space applications. The Space ST is an M83522 style variant, which features a higher spring force than commercial ST connectors, allowing it to meet the shock and vibration requirements of MIL-C-83522.



Startop

Startop product range offers the most comprehensive range of ruggedized optical connectors based on MIL DTL 38 999 Series and its derivatives. Startop offers the intermateability with other MIL 29504.



TACBEAM

Amphenol introduces the TACBeam Series into the harsh environment product portfolio. This legacy hermaphroditic fiber optic lens connector, facilitates the inter-connection of multiple identical fiber optic cable assemblies known as daisy chaining, thus eliminating the need for polarising the assemblies and the use of in-line adapters.



TacBeam as per VG95319-100; -101

TacBeam is a hermaphroditic lens connector, insensitive to dust and dirt. This connector is qualified as per MIL-DTL-83526/20 and 21. In addition, it is approved as per VG95319-100; -101, and is thus suitable for outdoor applications. A marine bronze version is also available (according to VG95319-102).



TACBeam® - MIL-DTL-83526

AFSI offers a MIL-DTL-83526/20 & /21 qualified expanded beam rugged fiber optic connector for military and industrial applications. Since the lenses do not physically contact, there is no wear on the termini, which allows the connector to be mated and demated thousands of times without affecting optical performance.



TFOCA-III® Fiber Optic Connectors

The TFOCA-III® series of 6 & 24-channel fiber optic connectors are ideal for environmentally harsh conditions. The TFOCA-III® design utilizes the latest technology in fiber optic connectivity by incorporating industry-standard physical contact ceramic ferrules and alignment sleeves.



TFOCA-II® 12-Channel Fiber Optic Connectors

The TFOCA-II® 12-ch. connector, designed and patented by AFSI, is ideal for environmentally harsh conditions and its design takes advantage of the latest technology by utilizing industry-standard physical contact ceramic ferrules. The TFOCA-II® connector is designed for minimal maintenance in the field, and its removable end cap allows direct access to the alignment sleeve and termini.



TFOCA-II® 12-Channel RigLinQ

The TFOCA-II® 12-channel RigLinQ hybrid design lowers overall systems cost and greatly reduces panel mounts footprint by combining optical and electrical signals in one quick connect housing. This design takes advantage of the latest technology by utilizing an industry-exclusive fully articulating optical termini for superior optical performance and environmental open-face sealing.



TFOCA-II® 4-Channel Fiber Optic Connectors

AFSI, in collaboration with the United States Army CECOM, designed the “next generation” deployable fiber optic connector for the emerging “knowledge-centric warfare communication” requirements of the future battlefield. The heart of the TFOCA-II® centers on the sealed free-floating termini which enables the connectors to seal against high humidity and moisture conditions.



TFOCA-XBT® Expanded Beam Connectors

Amphenol Fiber Systems International’s TFOCA-XBT4® incorporates expanded beam technology into the proven TFOCA-II® connector form factor. The TFOCA-II® physical contact connector is the standard fiber optic connector for the US Army, designed for and proven in the harshest of military and industrial applications.



THDM Series

The THDM is a MIL-PRF-28876 derived mechanical transfer (MT) rugged fiber optic connector for military and aerospace applications. THDM is modular, allowing multiple combinations of fiber types to be used in the same connector.



TVOP

New generation TVOP uses the proven 38 999 or derivated shell, and the standard termini (Ø 2.5 mm) which is designed to provide high reliability performance and cost effective solutions for outdoor and indoor applications.



XFP 10G Transceivers

XFP 10G optical transceivers include SR, LR, ER, ZR and support Duplex, BiDi, CWDM, and DWDM solutions. They adopt an LC interface and are compatible with IEEE802.3ae, XFP MSA, and other standards. XFP 10G optical transceivers have the characteristics of low power consumption, small size, and high speed. They are most commonly used in Transmission, Storage Area Networks, and other environments.

Алматы (7273)495-231
Ангарск (3955)60-70-56
Архангельск (8182)63-90-72
Астрахань (8512)99-46-04
Барнаул (3852)73-04-60
Белгород (4722)40-23-64
Благовещенск (4162)22-76-07
Брянск (4832)59-03-52
Владивосток (423)249-28-31
Владикавказ (8672)28-90-48
Владимир (4922)49-43-18
Волгоград (844)278-03-48
Вологда (8172)26-41-59
Воронеж (473)204-51-73
Екатеринбург (343)384-55-89

Иваново (4932)77-34-06
Ижевск (3412)26-03-58
Иркутск (395)279-98-46
Казань (843)206-01-48
Калининград (4012)72-03-81
Калуга (4842)92-23-67
Кемерово (3842)65-04-62
Киров (8332)68-02-04
Коломна (4966)23-41-49
Кострома (4942)77-07-48
Краснодар (861)203-40-90
Красноярск (391)204-63-61
Курск (4712)77-13-04
Курган (3522)50-90-47
Липецк (4742)52-20-81

Магнитогорск (3519)55-03-13
Москва (495)268-04-70
Мурманск (8152)59-64-93
Набережные Челны (8552)20-53-41
Нижний Новгород (831)429-08-12
Новокузнецк (3843)20-46-81
Ноябрьск (3496)41-32-12
Новосибирск (383)227-86-73
Омск (3812)21-46-40
Орел (4862)44-53-42
Оренбург (3532)37-68-04
Пенза (8412)22-31-16
Петрозаводск (8142)55-98-37
Псков (8112)59-10-37
Пермь (342)205-81-47

Ростов-на-Дону (863)308-18-15
Рязань (4912)46-61-64
Самара (846)206-03-16
Санкт-Петербург (812)309-46-40
Саратов (845)249-38-78
Севастополь (8692)22-31-93
Саранск (8342)22-96-24
Симферополь (3652)67-13-56
Смоленск (4812)29-41-54
Сочи (862)225-72-31
Ставрополь (8652)20-65-13
Сургут (3462)77-98-35
Сыктывкар (8212)25-95-17
Тамбов (4752)50-40-97
Тверь (4822)63-31-35

Тольятти (8482)63-91-07
Томск (3822)98-41-53
Тула (4872)33-79-87
Тюмень (3452)66-21-18
Ульяновск (8422)24-23-59
Улан-Удэ (3012)59-97-51
Уфа (347)229-48-12
Хабаровск (4212)92-98-04
Чебоксары (8352)28-53-07
Челябинск (351)202-03-61
Череповец (8202)49-02-64
Чита (3022)38-34-83
Якутск (4112)23-90-97
Ярославль (4852)69-52-93

Россия +7(495)268-04-70 Казахстан +7(7172)727-132 Киргизия +996(312)96-26-47

<https://amphenol.nt-rt.ru/> || aox@nt-rt.ru