

Алматы (7273)495-231	Иваново (4932)77-34-06	Магнитогорск (3519)55-03-13	Ростов-на-Дону (863)308-18-15	Тольятти (8482)63-91-07
Ангарск (3955)60-70-56	Ижевск (3412)26-03-58	Москва (495)268-04-70	Рязань (4912)46-61-64	Томск (3822)98-41-53
Архангельск (8182)63-90-72	Иркутск (395)279-98-46	Мурманск (8152)59-64-93	Самара (846)206-03-16	Тула (4872)33-79-87
Астрахань (8512)99-46-04	Казань (843)206-01-48	Набережные Челны (8552)20-53-41	Санкт-Петербург (812)309-46-40	Тюмень (3452)66-21-18
Барнаул (3852)73-04-60	Калининград (4012)72-03-81	Нижний Новгород (831)429-08-12	Саратов (845)249-38-78	Ульяновск (8422)24-23-59
Белгород (4722)40-23-64	Калуга (4842)92-23-67	Новокузнецк (3843)20-46-81	Севастополь (8692)22-31-93	Улан-Удэ (3012)59-97-51
Благовещенск (4162)22-76-07	Кемерово (3842)65-04-62	Ноябрьск (3496)41-32-12	Саранск (8342)22-96-24	Уфа (347)229-48-12
Брянск (4832)59-03-52	Киров (8332)68-02-04	Новосибирск (383)227-86-73	Симферополь (3652)67-13-56	Хабаровск (4212)92-98-04
Владивосток (423)249-28-31	Коломна (4966)23-41-49	Омск (3812)21-46-40	Смоленск (4812)29-41-54	Чебоксары (8352)28-53-07
Владикавказ (8672)28-90-48	Кострома (4942)77-07-48	Орел (4862)44-53-42	Сочи (862)225-72-31	Челябинск (351)202-03-61
Владимир (4922)49-43-18	Краснодар (861)203-40-90	Оренбург (3532)37-68-04	Ставрополь (8652)20-65-13	Череповец (8202)49-02-64
Волгоград (844)278-03-48	Красноярск (391)204-63-61	Пенза (8412)22-31-16	Сургут (3462)77-98-35	Чита (3022)38-34-83
Вологда (8172)26-41-59	Курск (4712)77-13-04	Петрозаводск (8142)55-98-37	Сыктывкар (8212)25-95-17	Якутск (4112)23-90-97
Воронеж (473)204-51-73	Курган (3522)50-90-47	Псков (8112)59-10-37	Тамбов (4752)50-40-97	Ярославль (4852)69-52-93
Екатеринбург (343)384-55-89	Липецк (4742)52-20-81	Пермь (342)205-81-47	Тверь (4822)63-31-35	
	Россия +7(495)268-04-70	Казахстан +7(7172)727-132	Киргизия +996(312)96-26-47	

<https://amphenol.nt-rt.ru/> || aox@nt-rt.ru

Circular Connectors



2M Micro38999 Connectors

Designed for applications that demand size and weight savings without sacrificing the electrical and mechanical performance of a standard MIL-DTL-38999. 70% Lighter and 50% Smaller than Similar MIL-DTL-38999 Connectors. Fully Intermateable, Intermountable, and Interchangeable with Mighty Mouse.



2M Micro Miniature

2M is a micro-miniature circular connector designed for interconnect applications requiring high performance and reduced size and weight in harsh environments. Amphenol offers different 2M connectors to answer all your needs, with Dual-Start Acme Threads, Tri-Start threaded coupling, ¼ turn bayonet, and push-pull quick disconnect versions.



387TV Series

Size 7 connectors dedicated to size 8 high-speed contacts (Coax, Twinax, Quadrax, 1Gb Octomax, 10Gb Octomax coming soon) and fiber optic.



38999 Integral Accessories

D38999 Series III style connectors featuring an integral banding platform or integral strain relief eliminate the need for an additional backshell accessory. The banding platform incorporated into the rear of the connector shell allows the user to attach the shield of their cable directly to the connector, providing superior EMI shielding, enhanced sealing, and ease for overmold applications.



38999 Reduced Flange Jam Nut Receptacle

The 38999 reduced flange connector provides more density on the panel with a 41% surface saving in harsh environment applications. This connector is designed for harsh environment applications across multiple markets, such as ground vehicles, data acquisition equipment, planes, helicopters, avionics calculators, and UAVs where superior electrical performance and surface savings are needed.



62GB

A range of miniature, multi-contact circular connectors with bayonet coupling and non-removable solder contacts for AC and DC applications.



62IN Series miniature connectors

Amphenol 62IN series connectors are general-purpose, environmental resistant, miniature circular connectors with three-point bayonet coupling & five keyway polarization, design to meet the requirement of MIL-DTL- 26482 series 1 solder type, These connectors are widely used in military & Industrial application, available in a variety of sizes, styles & configuration.



7/8" Mini Connectors

Amphenol LTW's 7/8" Mini connectors are designed according to IEC standards and are ideal to fulfill watertight, vibration resistant, and EMC protection in industrial harsh applications. Developed in receptacle, field installable, and over-molded cable to satisfy industrial connector demand.



7 Pin SOCAPEX

The original SOCA connector to supply power to hoist motor in stage lighting with 7 gold plated contacts for high conductivity & durability.



97B Reverse Bayonet Connectors

Amphenol 97B reverse bayonet coupled connectors designed to meet the requirement of MIL-DTL-5015, available in a variety of styles & classes. Connectors having features like quick mating of bayonet coupling with audible full mating features provides resistance to shock & vibration and avoid connector decoupling in even the most ruggedized application.



97 E Pre-Earth FMLB

This series, meeting applicable requirements of SAE AS50151 is a Pre-Earth/First Mate Last Break, IP67 protected, metal, threaded coupling, power, and signal connector. With 12 insert arrangements ranging from 3 to 9 contacts per connector and up to 80 amps possible with a standard operating temperature from -55°C to +125°C.



97 Series

This series, a general duty version of the SAE AS50151 metal, threaded coupling, power, and signal connector. With 128 insert arrangements ranging from 1 to 52 contacts per connector and up to 150 amps possible with a standard operating temperature from -55°C to +125°C.



ACA-B Series

This series meets the applicable requirements of SAE AS95234 and VG95234 with optional RADSOK® socket contacts for up to 250 amps possible in a ruggedized harsh environment, metal, reverse bayonet coupling, power, and signal connector. With over 280 insert arrangements ranging from 1 to 85 contacts per connector with a standard operating temperature from -55°C to +125°C.



AC Threaded

This series, meeting applicable requirements of SAE AS50151 and up to 250 amps possible with optional RADSOK® socket contacts is a general duty or ruggedized harsh environment, metal, threaded coupling, power, and signal connector. With over 275 insert arrangements ranging from 1 to 85 contacts per connector with a standard operating temperature from -55°C to +125°C.



Amphe-BTS

This series, based on the MIL-DTL-26482 series 2 with clip retention crimp contacts and EMI shielding, is a ruggedized harsh environmental, brass, bayonet coupling, power connector. With two or three poles per connector and up to 20 amps possible with a standard operating temperature from -55°C to +85°C.



Amphe-Ex

Miniature, explosion-proof connector specifically designed to allow a signal to pass through Zone rated areas using copper contacts, coax, or fiber optics. The new Amphe-EX™ is complimentary to Amphenol's industry-proven Star-Line EX™ enabling it to work with smaller wires.



Amphe-GTR

This series, utilizing RADSOK® technology socket contacts, is an IP67 rated, thermoplastic, reverse bayonet coupling, high power connector. With four or five contacts per connector and up to 120 amps possible with a standard operating temperature from -40°C to +125°C.



Amphe-Lite

This series, a commercial 38999 Series III type, ruggedized harsh environment, composite, tri-start ACME threaded coupling, signal connector. With over 60 insert arrangements ranging from 2 to 128 contacts per connector and up to 33 amps possible with a standard operating temperature from -55°C to +125°C.



Amphe-OBTS

This series, similar to the Amphe-BTS with MIL-DTL-26482 type bayonet coupling and EMI shielding, is a ruggedized, harsh environmental power connector with zinc shell components. It has two or three screw termination contacts per connector and up to 26 amps possible with a standard operating temperature from -55°C to +105°C.



Amphe-Power

This series, based on SAE AS50151 and AS95234 utilizing RADSOK® socket contact technology, is ruggedized for harsh environments, high power connectors with metal threaded, reverse bayonet, or push/pull coupling. With over 90 insert arrangements ranging from 1 to 59 contacts per connector and up to 1000 amps possible with a standard operating temperature from -55°C to +125°C.



Amphe-PPM

This series, is a rapid-mating, general duty, or ruggedized harsh environment, metal push/pull coupling, power, and signal connector. With over 20 insert arrangements ranging from 2 to 12 contacts per connector and up to 23 amps possible with a standard operating temperature from -40°C to +100°C.



Amphe-PRB

This series, utilizing RADSOK® socket contact technology, is an IP67 rated, thermoplastic reverse bayonet coupling, high power connector. With over six insert arrangements ranging from 3 to 5 contacts per connector and up to 70 amps possible with a standard operating temperature from -40°C to +100°C.



Apollo

The Apollo Series is perfect for medical devices and many other applications. With the latching capability, this connector allows for a large number of cycles. This series allows several color-coding options, a special keying option, high resistance to chemicals, shock, and sterilization processes. This connector is customizable and designed for use in medical, and many other applications.



AT Circular

This series, is a ruggedized harsh environment, thermoplastic reverse bayonet coupling signal connector. With three insert arrangements from 3 to 9 contacts per connector commonly used for SAE J1939 vehicle bus diagnostics and up to 13 amps possible with a standard operating temperature from -40°C to +125°C.



ATHD

This series, a heavy-duty, ruggedized harsh environment, thermoplastic in-line power connector with integrated latch push/pull coupling. With two single-pole insert arrangements ranging from 12 AWG to 8 AWG contacts per connector 60 amps possible with a standard operating temperature from -55°C to +125°C.



ATHD Series™

Our ATHD Series™ Single-Pole, Heavy Duty Power Connectors provide an IP67/69K rated (mated), environmentally sealed connection system and viable solution to field splices and terminals in harsh environments. Safety features include an integral latch to prevent inadvertent disconnect and an audible click, tactile feel provide circuit confirmation



Bantam Micro-Bayonet Connectors

Bantam is a high-performance circular connector product range developed for aerospace applications where electrical performance must be met with affordability. High mating cycles along with excellent shell-to-shell electrical bonding for EMI are the benchmark of rugged connectors. Bantam provides a solution that meets your budget and performance goals.



BKC

The BKC (Baby King Cobra) series is a Quarter-turn economical miniature form factor circular connectors with lightweight, non-corrodible, composite material and qualified to UL #E220614.



Boeing Certified BACC 5015

The BACC5015 connectors are qualified to Boeing Specifications to satisfy general-purpose requirements and unique product challenges for shielding, environmental sealing, fluid resistance, and vibration. Rear-Release crimp contacts with a retention clip. Sealed to withstand moisture, condensation, vibration, and flash-over. Multiple arrangements are available for power, signal, or mixed.



Breakaway / Push-Pull Military Connectors

Amphenol LTW FLOS Y Series Robust Metal Circular Connectors are an advanced and highly reliable solution with Push-Pull or Break-Away locking for military applications.



Bulkhead Connectors

Amphenol thru bulkhead connectors are double-end panel connectors with standard variant Pin contact on one side & socket on the other side. There are other combinations available like Pin-Pin & socket-socket contacts. Connectors are matable from both sides with cable plug connectors with opposite gender contact. These connectors are used in various Military & Industrial applications.



Cable Gland Connectors

Amphenol LTW's Cable Glands are applied in conjunction with cable or wiring for power or electrical purpose. The Cable Glands are attached to the end equipment and act as a sealing of the terminating housing to ensure the protection of electrical equipment and enclosures. Available in different sizes, materials; this is the most cost-effective waterproof solution.



Cable Joiner & FICX Connectors

Amphenol LTW's Cable Joiner was designed and developed for simple, quick, and reliable cable interconnections. It is available in several options to meet various cable O.D. and wire sizes. Amphenol's cable joiner also meets the latest requirements for locking protection. Installation is quick and simple with standard crimping terminals or screw terminal blocks for different application needs.



Ceres Connectors (Circular Connectors)

Amphenol LTW Circular Waterproof Connectors are available as a receptacle, receptacle connector with cable, and over-molded with cable. The field installable options are available in multiple sizes mini, standard, middle, and large. The Circular Waterproof Connectors offer $\leq 10\text{m}\Omega$ contact resistance, $\leq 100\text{M}\Omega$ at DC500V insulation resistance, and at least 1,000 mating cycles.



CMB

This series, a commercial MIL-DTL-26482, Series 1 solder contact, general duty or ruggedized harsh environment, metal bayonet coupling, power, and signal connector. With over 60 insert arrangements ranging from 1 to 61 contacts per connector and up to 23 amps possible with a standard operating temperature from -55°C to $+125^{\circ}\text{C}$.



CONEC Enclosure technology customized

As a specialist for enclosure technology we provide to you with pleasure an offer coordinatedly at your quite individual requirements. Connectors versions: M8x1, M12x1, 7/8", Hybrid, flange versions and / or integrated versions with preassembled contacts



CONEC Hybrid Connectors

Saving costs and installation space in interface wiring by using intelligent hybrid connector technology. With the new CONEC series, a compact hybrid connector system has been developed, combining power supply and data transmission in one single connector. Depending on the application, four sizes, B12, B17, B23, and B40 are available.



CONEC M12x1 Series with Bayonet Quick Locking

The CONEC connector series with bayonet quick locking system allows safe and quick locking even in areas that are difficult to reach and/or not visible. With the “three-point” bayonet locking it is possible to lock the connection by hand with a 90 ° turn. You get direct tactile and acoustic feedback as soon as the connector is locked.



CONEC M12x1 Series X-Coding

In view of the increasing amount of data in industrial plants, designers and planners are faced with the question of how to transfer data quickly and reliably. Typical areas of application that require continuously higher data transmission rates are, for example, vision and scanner systems for production monitoring and real-time data evaluation.



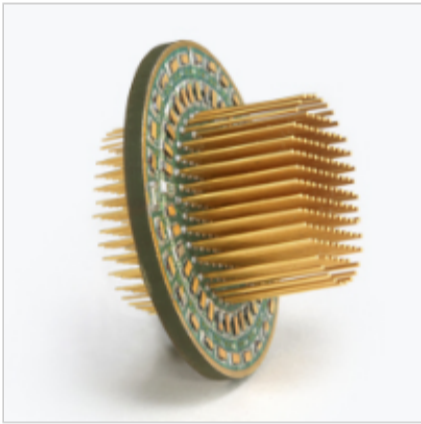
CONEC Series M8x1 D-Coded "Fast Ethernet"

With M8x1 D coding, Industrial Ethernet transmission is implemented using a 4-pole M8x1 connector in conjunction with a 360° shielding and a standard Ethernet cable. Together with the contacts changed to 0.8 mm diameter, the connector enables a transmission rate of up to 100 Mbit/s (Fast Ethernet).



CONEC Series M8x1 P-Coded "EtherCAT P"

The special feature of EtherCAT-P is the combination of superfast EtherCAT communication with the 24 V power supply. Data and power (Us) for system and sensor supply with 24 V and 3 A are provided on a two-wire data pair. The second data pair provides data and the peripheral voltage (Up) for the supply of the actuators.



Diode Connectors

Offer the versatility of a standard connector, with transient protection for sensitive circuits, such as TTL Lines. Failures generated by load switching, lightning, electrostatic discharge (ESD), and an electromagnetic pulse (EMP) can destroy unprotected IC components. Compatible with present filter connector assembly procedures, diodes can stand alone or can be combined in series with filters.



DL Series

DL Series are highly reliable circular connectors (wire soldering type) approved by TUV satisfying European safety standards and UL standards. They feature IP67 class water and dustproof, when mated, and a protective earth circuit with first mate break grounding contacts. They are ideal for use in machine tools, robots, and other industrial machines.



DuraMate™ Family

Amphenol Sine Systems’ DuraMate™ Family of IP68/69K rated (mated), environmentally-sealed, multi-pin, heavy-duty, plastic (AHDP) or metal (AHDM), circular connectors provide an economical, quick-connect, bayonet locking system manufactured to withstand the challenges and complexities of harsh environment off-road applications.



ecomate® Aquarius™

Available in Shell Sizes 8, 10, 12, 14, 16, and 18 and 27 Insert Arrangements for Power, Mixed Power/Signal, Coax, and RJ45 layouts. Amphenol Sine Systems’ ecomate® Aquarius Waterproof Connectors provide an IP67/69K waterproof rating when in a mated condition for industrial applications and incorporates the latest technology in high impact thermoplastic design, offering many advantages.



eco|mate® | Circular Connectors

The eco|mate® series is one of our most famous Amphenol brands. Five subseries offer solutions based on plastic circular and metal circular connectors. 11 Shell Sizes and a huge variety of connector types enable almost any configuration. Up to 300A, 900V and 48 poles can be used in the fields of machine building, agriculture, lighting, or robotic.



ecomate® Family

Circular, Multi-Way, Plastic, or Metal Waterproof Connectors. The ecomate® family of circular, multiway connectors provide an IP65-69k rating range (in mated condition) for indoor/outdoor industrial applications and feature robust, durable plastic or metal designs with either bayonet or rapid coupling systems. Ideal for Factory Automation, Industrial, Heavy Equipment, Heavy Duty, Transportation

ecomate® RM

Available in 8 Shell Sizes / 32 Insert Arrangements. (High Amperage versions available in ecomate® RM High Amperage). The ecomate® RM (Rugged Metal) Series of circular, metal connectors provide an IP67 rating (in mated condition) for industrial applications and offers both standard and high amperage versions, all in a sealed connector system.



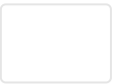
ecomate® RSSM

Available in 8 Shell Sizes / 27 Insert Arrangements. The ecomate® RSSM (Rugged Superior Seal Metal) Series of circular, metal connectors provides an IP69K rating (in mated condition) for industrial applications. With a bayonet coupling system and a maximum current rating range of 7A to 45A/600V, the ecomate® RSSM Series is perfect for indoor/Outdoor applications.



EFP HAZLOC

The EFP series has a similar modular design to the HDS series but is designed and certified for use in EX hazardous locations such as drilling rigs and oil refineries. CSA C22.2 No. 182.3-1987, CSA C22.2 No. 30-1986, CSA C22.2 No. 60079-0 - 2007, CSA C22.2 No. 60079-1 - 2007, UL 1977 2nd edition, ISA/ANSI 60079-0 -2009, ISA/ANSI 60079-1-2009, UL1203 4th edition, IEC 6007-0, IEC 60079-1



Circular Connectors



EMI Wind-Lok®

This series, is an EMI shielded, ruggedized harsh environment, metal reverse bayonet coupling, high power connector utilizing RADSOK® socket contact technology. With a single-pole 18mm RADSOK® contact and up to 800 amps possible with a standard operating temperature from -40°C to +125°C.



EN3645

Similar to MIL-DTL-38999 series III with additional requirements. Higher lightning strikes requirements (up to 15kA). Higher resistance to fluid.



ETV38999

ETV38999 is a high-performance circular connector product range developed for next-generation Aeromotive applications where performance must be met with affordability. This Aeromotive 38999 is ideal for the Urban Air Mobility market where high-performance mil-spec style products are needed at a cost-effective price.



FLOS & FLOS+ Push-Pull Connectors

Amphenol LTW's FLOS & FLOS+ Series Push-Pull Connectors are designed to offer a reliable connection for data, signal, and power transmissions in indoor and outdoor environments (such as industrial automation, military, marine, and broadband wireless). These push-pull connectors feature a push-pull mechanism, corrosion-resistant coating, excellent 360° shielding.



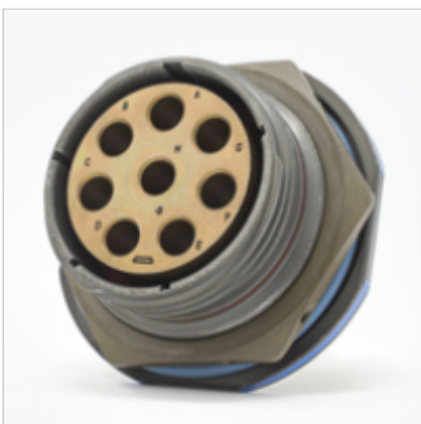
Front Runner

The Front Runner series offers a multiplicity of connector features which makes it a first choice to meet the high performance and high-reliability requirements of medical, transportation, industrial control, and avionics applications. It's constructed with lightweight, non-corrodible material. EMI/RFI shielded version with electroless nickel plated plastic is available, as well as an IP67 version



GCB-B Connectors - VG95234

Circular connectors in the GCB-B series with reverse bayonet locking according to VG95234. These connectors offer high reliability, are waterproof as well as wear- and vibration-resistant. They are also approved according to VG95234 version B (marine bronze) and VG95234 version J (zinc-tin).



Ground Plane Connectors

MIL-DTL-38999 type connectors with metal inserts to maintain a common ground plane with the shell for all the shielded contacts contained in the connector. For High Speed Data Bus, LAN and Coax, Triax and Twinax Data Transmission. Applications for ground plane connectors include MIL-STD 1553B data bus as well as video, signal and multiplex transmission.



Ground Plane D38999/EN3645

Derived from MIL-DTL-38999 & EN3645, consists of metallic inserts to maintain electrical continuity between the shell and contacts.



GT

This series meets the applicable requirements of SAE AS95234 and VG95234 with optional RADSOK® socket contact technology in a ruggedized harsh environment, metal reverse bayonet coupling, power, and signal connector. With over 280 insert arrangements ranging from 1 to 85 contacts per connector and up to 250 amps possible with a standard operating temperature from -50°C to +200°C.



Guided M8 Connectors

Amphenol LTW's waterproof Guided M8 connectors are designed with unique alignment keys saving the risk of damaged contacts and developed with comprehensive product configurations following IEC standard, delivering secure & reliable data/power transmission for industrial harsh applications.



HD38999

The HD38999 family of connectors is designed to work with existing mil-specified 38999 shells. To the end-users familiar with standard 38999 connectors, this family of high-density connectors will look, feel and perform just like MIL-qualified connectors.



HD38999 High Density

Features 30% more contact density than standard MIL-DTL-38999 inserts while utilizing the same connector dimensions and shell sizes. This connector design benefits users who need to increase the number of contacts in their application, allowing them to do so without increasing the size of their connector. Qualified to MIL-DTL-38999 Series III.



HS-Lok Push-Lock Connectors

Amphenol LTW's HS-Lok Push-Lock Connectors provide IP68 waterproof protection and are rated to UL-F1 UV resistance, making them ideal for indoor or outdoor wet locations. HS-Lok features audible feedback and guided key design, ensuring error-proof and easy assembly for blind mating.



Iguana 38999

Iguana is intermateable with MIL-DTL-38999 Series III and is waterproof up to IP68 in both mated and unmated conditions. The series is optimised for PCB applications and is pre-loaded with pin-tail contacts and includes integrated moulded stand-offs to facilitate inspection and cleaning. Optional integral ground pins provide low-impedance shell-to-ground connections for improved EMI performance.



Industrial Circular Metal Connectors - MIL Style

C015 Circular Connectors: The six- and seven-pole circular connectors of the C015 series are according to the requirements of EN 175 000. The series is distinguished by its stable design and easy handling. MS 5015 Circular Connectors: The MS 5015 class is a standard of cylindrical MIL-C-5015 connectors, according to the latest performance requirements of MIL-C-5015.



JSFC15/JSFC16 Connectors

Fiber optic connectors approved for use in JSF/F-35 applications. Based on Amphenol Composite Tri-Start, Qualified to MIL-DTL-38999. Nickel plating (200°C) can withstand 2000 hours of salt spray exposure. 1500 couplings minimum. Recessed pins in this 100% scoop-proof connector minimize potential termini damage.



JT - D38999 Series II

The JT connectors are in accordance with the MIL-DTL-38999 Series II standard. These connectors were developed to meet the needs of the aerospace industries. They offer a large variety of contact arrangements and shell styles, with maximum weight/space savings and reliability.



LJT/HE308 - D38999 Series I

Amphenol Socapex is a MIL-DTL-38999 series I standard QPL and HE308 qualified manufacturer. The LJT product range was developed to meet the needs of the aerospace and military industries. It offers bayonet coupling connectors with a large variety of contact arrangements and shell types, maximum weight/space-saving, and 100 % contact protection.



LPT

This series, a commercial MIL-DTL-26482, Series 1 crimp contact, general duty or ruggedized harsh environment, metal bayonet coupling, power, and signal connector. With 20 insert arrangements ranging from 2 to 55 contacts per connector and up to 35 amps possible with a standard operating temperature from -40°C to +125°C.



Luminus

Luminus are small, lightweight, cost-effective connectors that are highly reliable and simple to use. With multiple configurations and arrangements available, a solution can be tailored to suit your application's exact requirements. RoHS and REACH compliant.



M10.5 Connectors

Amphenol LTW's waterproof M10.5 connectors are designed in various product configurations and deliver secure & reliable data/power transmission for industrial harsh applications. With a compact design, it's ideal to fulfill miniature interconnection requirements.



M12

M12 Snap-On & Screw has been designed for railway and industrial automation applications. Crimping contacts and inserting the rubber case are both easy and convenient. Rated current from 0.5 to 4 A, 30 to 250V. • Both snap on & screw locking types are available • Quick mating • 360° shielding. • A/D/X Code available • Sealing, IP67 • Fire protection acc. to EN45545-2 R22 HL3.



M12 Connectors

Amphenol LTW's waterproof M12 connectors are designed in various coding options with comprehensive product configurations according to IEC standards, delivering secure & reliable data/power transmission for industrial harsh applications. ALTW's proprietary MPronto push-pull and UHD designs (ultra-high density, up to 28 pins) optimize the utilization of pin contact in limited housing space.



M12 Hermetic Connectors

These connectors are miniature threaded, hermetically sealed connectors that are designed to meet and exceed the mechanical and environmental requirements IEC-61076-2-101 with fixed pin contacts, fused into a glass dielectric insert. These connectors are available as Stainless Steel receptacles with eyelets, solder buckets, or PCB contacts.



M12 SMT/DIP Connectors

Amphenol LTW's M12 SMT/DIP connectors are designed in various coding options for surface mounting termination and make it cost-effective by delivering secure & reliable data/power transmission for limited space applications. It's ideal for an automated pick and place process with tape & reel packages.



M23 Connectors

Amphenol LTW's M23 connectors are designed according to IEC standard and ideal to fulfill watertight, vibration resistant, and EMC protection in industrial harsh applications. Developed in receptacle, field installable and overmolded cable (upon request) to satisfy industrial inconnection demand.



M5 Connectors

Amphenol LTW M5 Connectors are the smallest and lightest connectors from M series suitable for miniature sensor and other applications with extreme limitation in space. These screw locking threaded connectors meet the IEC 61076-2-105 standard and are available in preassembly overmolded and receptacles from 3 to 4 contacts, with upgrade option to UHD (Ultra High Density) upon request.



M8 Connectors

Amphenol LTW's waterproof M8 connectors are designed in various coding options with comprehensive product configurations according to IEC standard, delivering secure & reliable data/power transmission for industrial harsh applications. ALTW's proprietary UHD design (ultra high density, up to 13 pins) optimizes the utilization of pin contact in limited housing space.



M8 SMT/DIP Connectors

Amphenol LTW's M8 SMT/DIP connectors are designed for surface mounting termination and make it cost-effective by delivering secure & reliable data/power transmission for limited space applications. It's ideal for automated pick and place process with tape & reel package.



MagConnect™|Echo

The MagConnect™|Echo Series is perfect for medical devices that are designed for disposal after a large number of cycles. This connector is a cost competitive option with an intuitive and innovative design. The series is available in panel mount or in-line cable. It is compact, customizable, and its unique magnetic safety latch feature is ideal for medical applications.



MagConnect™|HV

The Magconnect™|HV is perfect for most medical devices and is designed to be disposal or non disposable. This connector is also designed for rough handling, shock, vibration, and extreme conditions. This 11 pin(5HV pins & 6LV pins)connector(4.5K for HV Pins and 2K VDC for LV Pins)is destined for use in medical devices and many other applications which are available in panel mount or in-line cable.



MagConnect™|Rho

The MagConnect™|Rho Series has an elliptical keying feature and a unique magnetic safety latch feature which is perfect for medical devices that are designed for disposal after a large number of cycles. Circuitry with components is easily added to the PCBA Platform while having reusable and disposable options available with ETO, Gamma, and autoclave safe materials.



Max-M12

This series, a high-speed SAE J2839 compliant, ruggedized harsh environment, metal threaded coupling signal connector. With over 10 insert arrangements ranging from 3 to 12 contacts per connector and up to 16 amps possible with a standard operating temperature from -40°C to +85°C.



MDP FTV

Amphenol SOCAPEX rugged Display solutions are designed to transmit video data & information in harsh environments for applications such as C5ISR, ground vehicles, navy. It ensures a reliable transmission between display screens, cameras, computers. Any standard Displayport plug or cordset is converted into a military-grade solution for harsh environments with high level of sealing and durability.



Medi|Mate Connectors

Medi|mate connector kits combine the familiarity of circular push-pull interconnects with Amphenol's unparalleled commitment to quality products. Sterilizable, reliable, and robust, Medi|mate is available in multiple keying and color options, enabling fast and safe product identification wherever multiple interconnects are used.



Medi|stac® Connectors

At 132 circuits and beyond, the Medi|stac® connector series provides improved value by delivering superior signals through an ergonomic and cost-effective package. Medi|stac® was designed for easy termination of fine gauge wire to a flex circuit tail for an added adaptability in applications at a lower cost.



MedLock Ultra

MedLock Ultra is an ultra-high density connector which can populate up to 146 pins. This connector has a large capacity in both power and bandwidth, which is perfect for most medical devices that are designed for disposal. This connector provides secure signal transmission in a small space and designed to meet most medical applications and more.



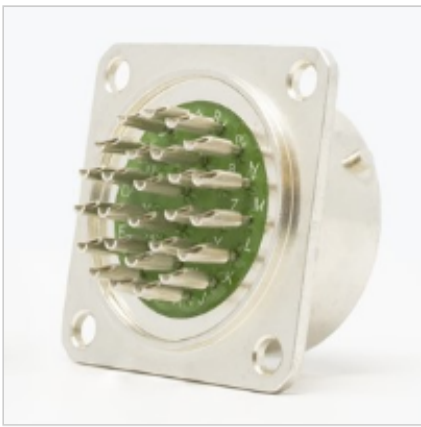
Micro-Bayonet

This series, a small footprint, lightweight, high contact density, stamped & formed crimp contact, IP54 rated metal bayonet coupling, signal connector. With three insert arrangements ranging from 7 to 15 contacts per connector and up to 3 amps possible with a standard operating temperature from -40°C to +125°C.



MIL-DTL-26482 Series I Connectors

This series, a mil-qualified MIL-DTL-26482, Series 1 crimp and solder ruggedized harsh environment, metal bayonet coupling, power, and signal connector. With over 60 insert arrangements ranging from 1 to 61 contacts per connector and up to 23 amps possible with a standard operating temperature from -55°C to +125°C.



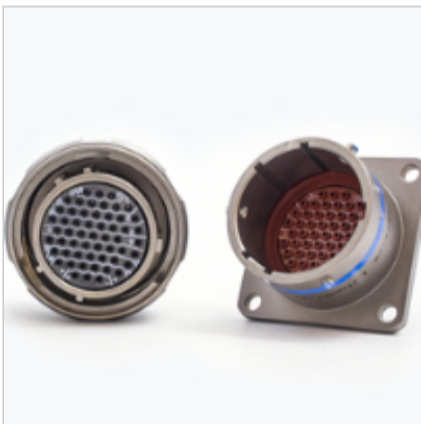
MIL-DTL-26482 Series I Hermetic Connectors

Amphenol Miniature Circular connectors offer twice the number of contacts in just half the size of a standard connector. These hermetic connectors are available with solder cup or flat eyelet pin contacts in the MS (QPL) or PT (Proprietary) version.



MIL-DTL-26482 Series II Connectors

Matrix product line of MIL-DTL-26482, Series 2 Connectors. This series provides a bayonet coupling connector with crimp rear insertable, rear releasable contacts. Shells size 8 to 24. Contact sizes 20, 16, and 12. Quick positive coupling assured by 3-point bayonet coupling system. 34 insert patterns available from 3 to 55 circuits.



MIL-DTL-38999 Series I Connectors - LJT

Bayonet coupling, scoop-proof design qualified to MIL-DTL-38999 and MIL-DTL-27599 Series I. Series I and commercial LJT series connectors meet or exceed the Mil-Spec requirements and are available in aluminum or stainless steel as well as several different finish options.



MIL-DTL-38999 Series I Hermetic Connectors

Amphenol LJT Series subminiature cylindrical hermetic connectors are qualified to MIL-DTL-38999 Series I. These connectors were developed to meet the needs of the aerospace industry. With the lightweight & space-saving design, these connectors are 100% scoop-proof and available in Stainless Steel with several shell styles and contact options.



MIL-DTL-38999 Series II Connectors - JT

Originally developed for the aerospace industry during the development of MIL-C-38999. The lightweight, space-saving design also qualified to MIL-DTL-27599. Series II and commercial JT series connectors meet or exceed the Mil-Spec requirements and are available in aluminum or stainless steel as well as several different finish options.



MIL-DTL-38999 Series II Hermetic Connectors

Amphenol JT Series subminiature cylindrical hermetic connectors are qualified to MIL-DTL-38999 Series II. These connectors were developed to meet the needs of the aerospace industry. With the lightweight & space-saving design, these connectors are 100% scoop-proof and available in Stainless Steel with several shell styles and contact options.



MIL-DTL-38999 Series III Connectors - TV

Amphenol Tri-Start MIL-DTL-38999 Series III Connectors offer the highest performance capabilities for both general duty and severe environment applications. Meeting or exceeding MIL-DTL-38999 Series III requirements, Amphenol's Tri-Start connector is available in aluminum, stainless steel, or composite with several finish options.



MIL-DTL-38999 Series III Hermetic Connectors

MIL-DTL-38999 Series III Connectors offer the highest performance capabilities for both general duty and severe environment applications meeting or exceeding MIL-DTL-38999 Series III requirements. Our glass-to-metal sealed qualified connectors and MIL-equivalent connectors are available in Stainless Steel with several shell styles and contact options available.



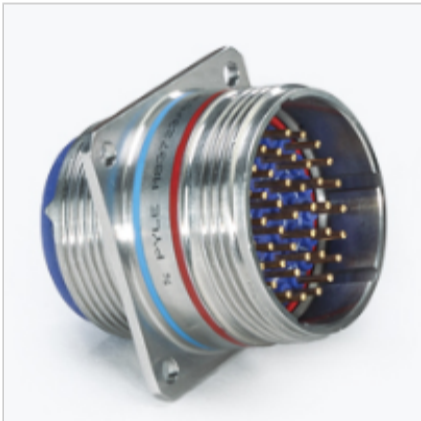
MIL-DTL-83723 Hermetic Connectors

The Amphenol MIL-DTL-83723, Series III family of connectors includes styles from PYLE National, which have proven technology for severe environments and are widely used in common and military aerospace markets. With a unique threaded coupling mechanism, these hermetic connectors eliminate the need for safety wiring.



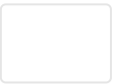
MIL-DTL-83723 (Matrix)

Medium-sized, environmentally resistant circular connector. MIL-DTL-83723 is used for both general-purpose and high-temperature applications in commercial aerospace. With three coupling style choices- bayonet, threaded and quick-disconnect - the versatility of this family makes it increasingly popular for panel mount, box mount and line-to-line applications in aircraft.



MIL-DTL-83723 (Pyle)

Includes styles from Pyle National, with proven technology for severe environments in commercial and military aerospace markets. These have proven technology for severe environments and are widely used in commercial and military aerospace markets. high-temperature styles are capable of operation at 260° C/500°F.



Circular Connectors



Miniature Bayonet Connector

Miniature circular bayonet coupling connectors meet MIL-26482 Series II requirements & its QPL qualified, Connectors with crimp contacts rear insertable & rear releasable contacts. Contacts are qualified to SAE AS 39029 & Grommet constructed as tear-resistant.



motion|grade™ | M23 and M40 Circular Connectors

Amphenol’s MotionGrade M23 and M40 products are ideally suited for advanced servo drive encoder feedback applications, packaging, robotics, printing, machine tool, medical and automation environments where control signal transmission or power are required in a robust and compact delivery system.



MOV - Metal Oxide Varistor Connectors

Offer the versatility of a standard connector with transient protection for sensitive circuits. Internal housing of the MOV sleeve offers weight and space savings over other protection methods available today and eliminates costly and bulky exterior suppression mechanisms in appropriate situations. Sleeves are presently available in contact sizes 22, 20, and 16.



MPronto-12 M12 Push-Pull Connectors

Amphenol LTW MPronto-12 Push-Pull plugs are the world's first truly backward compatible to all M12*1.0 threaded sockets with worldwide patents. The benefits and advantages: 100% backward compatible to all standard female M12*1.0 sockets of any manufacturer. Meets IP67, IP68 and IP69K. Saves more than 80% of installation time. Parts are available for sale enabling you to do your own cable assembly.



MS-5015 Connectors

This series, qualified to SAE AS50151, is the original ruggedized harsh environment, threaded coupling, metal, power, and signal connector. With over 230 insert arrangements ranging from 1 to 85 contacts per connector and up to 150 amps possible with a standard operating temperature from -55°C to +125°C.



MS Connectors

MIL-C-5015 features threaded couplings and single key/ keyway polarization, representing maximum simplicity in design. Applications include military ground support equipment, ordnance, and shipboard installations. Amphenol Industrial Operations manufactures five classes(A/B/E/F/R) of connectors to meet different requirements.



M Series Sensor Connectors

Amphenol LTW provides a comprehensive product range of M series, including M5, M8, Guided M8, M10.5, M12, and M23, available in receptacle, overmolded cable, field installable, and accessories.



MS Threaded Connectors

MS series connectors have a threaded coupling mechanism designed to meet requirements of MIL-DTL-5015 specifications. These connectors are designed considering various industrial application needs. But due to its features like low-cost environmental sealed connectors, they are used in other applications such as Mass transportation, Entertainment & Geophysical.



Nano Pegasus

Nano-Pegasus is a small, plastic, easy-to-use connector designed specifically for sensing, command, and control applications where a Micro or Nano Dsub would be used. Nano-Pegasus & Nano-Luminus provide exceptional performance in tight spaces, packing 11 high-grade contacts in a shell size 5 housing.



Neutrino

Onanon’s Neutrino which is a micro-scale connector with a large capacity in both power and bandwidth is designed to significantly reduce weight and size while utilizing a Flex-Pin contact system for a rugged, reliable performance. Ideal for medical applications where “fit, form, and function” is essential, such as handheld surgical devices, neuromodulation, and other hospital instrumentation.



NMEA 2000 Connectors

Amphenol LTW NMEA 2000 Connector System is specifically designed to meet NMEA 2000 protocols and standards. The IP68-rated family of multi-port, standard and metric circular connectors, sensor and actuator cables, and elbow joints are ideal for connecting marine electronic equipment and display units within ships and boats.



Pegasus

Pegasus is Amphenol Pcd's latest innovation in small, lightweight, rugged connectors. Designed for use in harsh environments, Pegasus builds on the successful Luminus Series Aerospace connector with the addition of EMI shielding. Tests show between 40db and 60db of attenuation, depending on frequency. RoHS and REACH compliant.



P-Lok®

This series, based on the SAE AS50151 is a ruggedized harsh environment, metal push/pull coupling, power and signal connector. With over 80 insert arrangements ranging from 2 to 26 contacts per connector and up to 135 amps possible with a standard operating temperature from -55°C to +125°C.



Pluto

The Pluto Series is ideal for medical devices and designed to be either disposable or reusable, suiting to a variety of medical applications such as ablation catheters, diagnostics, system connections, and more. This intuitive connector is a cost-competitive option with smooth and comfortable usability.



PT/451 Series

Amphenol PT/451 connectors are in accordance with American MIL-DTL-26482 Series I standard in crimp, solder, wire wrap, and PCB contacts versions, which are used in aeronautics, military, and industrial applications. PT/451 Series offers a multitude of options through their different backshell possibilities, contact terminations, and insert arrangements.



PT as per VG95328

Circular connector, PT, with bayonet locking, up to 61 contacts, approved as per VG95328 as per MIL26482 Series I, for crimp, solder, single solder, and wire-wrap contacts. An HF-sealed version is also available. The connectors of the PT series are also available in marine bronze (VG95328 version B) and Zinc-Tin (VG95328 version J) versions.



PT Series

This series, a commercial MIL-DTL-26482, Series 1 crimp and solder contacts, general duty or ruggedized harsh environment, metal bayonet coupling, power, and signal connector. With over 60 insert arrangements ranging from 1 to 61 contacts per connector and up to 23 amps possible with a standard operating temperature from -55°C to +125°C.



Pulse-Lok® Medical Connectors

Lighter and more cost-effective than traditional circular metal connectors, the Pulse-Lok® series offers field-proven interconnect solutions for your system’s needs. Utilizing our intuitive auto-coupling latch mechanism, Pulse-Lok® assures the user of a secure connection with visual, audible, and tactile confirmation of engagement.



Pyle 26500

Medium-sized connectors with a rugged design, lightweight construction, and continuously dependable performance serving such diverse fields as avionics, missile systems, aircraft general-purpose applications, aircraft engines, and firewalls. Aluminum, stainless steel, firewall versions. Wire splice connectors are also in this family.



Pyle 26500 Hermetic Connectors

Amphenol/Pyle Commercial 26500 Connectors are qualified to Military Specification MIL-DTL-26500, as well as numerous high-performance customer specifications. Available in Stainless Steel receptacle, with bayonet or threaded coupling. Amphenol/Pyle is an experienced supplier of highly reliable hermetic connectors for the aircraft industry and our ZZL and ZZB series of hermetics.



Ranger Connectors

Lightweight pin and socket connection. Designed for future solder requirements. Capable of USB 3.0, push-pull or breakaway mating, and IP-68 rated.



RBL Connectors

Amphenol LTW RBL Connectors are IP67-rated waterproof circular connectors with current ratings of 5A, 10A, or 20A. This Amphenol LTW waterproof connector series offers an operating temperature range of up to -40°C to +105°C and a durability of 250 cycles. RBL Connectors provide maximum contact resistance of 10mΩ and minimum insulation resistance of 100MΩ at 500VDC.



Receptacle "Stand off"

For quick and durable installation.



Receptacle with Enhanced Sealing

Withstand differential pressure with very low air leakage.



Reduced Flange Jam Nut Receptacles

The MIL-DTL-38999 Series III jam-nut style connector features a reduced flange design that saves space, weight, and reduces your footprint when used in PCB applications. More connectors are able to be fit on a box or board due to the reduced flange having a smaller diameter than a standard jam nut receptacle. 30% lighter than standard 38999/24 (w/o stand-offs).



Rig-Lok Vortex

RIG-LOK is a Single Pole, dual finger proof, metal connector that delivers high power thanks to the 19mm RADSOK technology. This connector can be terminated with cable from 4/0 up to 777MCM. Its through-shell conductivity between components allows grounding terminated to be conducted from gland to next connection with good EMI properties.



RJF TV Cat5e, Cat6, Cat6A - Rugged Ethernet RJ45 connectors

RJFTV allows you to use an Ethernet Class D/Cat. 5e/Cat6/Cat6A connection for 10 BaseT, 100 BaseTx or 1000 BaseT networks in harsh environments. The connectors are sealed against fluids and dust (IP68) and shock, vibration, and traction resistant. It's easy to implement since no cabling operation in the field or tools are required.



RNJLP - Rack & Panel Low Profile

RNJ Low Profile rack and panel connectors are designed to connect electrical devices between a moving unit (rack) and a fixed unit (panel). The locking of the mating pair is ensured by the mechanical device of the rack. The RNJLP design allows a short distance between the two panels. This is a big benefit for the systems where space is an issue.



RNJ - Rack & Panel

Rack & Panel Blind Mate connector for harsh environments.



RNJ Reduced Flange

Rack & Panel connector offering realignment & floatability for blind mate applications in harsh environments.



Rugged MRD Series Circular Locking Connectors

MRD series connectors are available in 2, 3, 4, 5, 6, 8, and 9 position form factors. Housing options include all plastic constructions as well as metal locking bodies for greater durability. Locking options include 1/3 turn bayonet locking as well as quick-release metal latches. Panel mount and cable termination options are available with or without finger-proof protection.



SC39

Light, small, strong push/pull, and quick release connectors.



sensor|mate® | Circular Signal Connectors

The Amphenol sensor|mate® circular connectors program is mainly utilized in the field of automation but can also be used for further applications of analog and digital signal transmission. In addition to standard applications, our M8-, M12- and 7/8" connectors also cover the areas of power and the ever-growing crucial sector of interconnection with huge data volumes.



signal|mate C091 | M16 Circular Connectors

Through its sophisticated design and efficiency, the signal|mate® C091 becomes a recognized industry standard. The modular structure of the series enables a broad field of applications. Because of its wide temperature range far below or above freezing and its suitability for machines with a high number of strokes, C091-series meets the challenges for several environmental conditions.



SJT as per VG96912

SJT circular connectors with bayonet lock, for crimp, single solder and wire wrap contacts, approved as per VG96912, PAN6433-2, JN 1003. The connectors in this series feature 100% contact protection (scoop-proof). They are also available in marine bronze (VG96912 version B) and zinc-tin (VG96912 version J).



SJT Connectors

SJT connectors combine unique design features of the scoop-proof LJT series within standard mounting dimensions of JT types. Available in a wide range of shell sizes, finishes, insert arrangements, and accessories. Special adaptations of the SJT are available for hermetic and high-temperature applications. Compliance with European Specifications – PAN6433-2, LN29729, VG96912.

Amphenol Aerospace Operations



SJT Hermetic Connectors

Amphenol SJT connectors combine unique design features of the scoop-proof LJT series within standard mounting dimensions of JT types. Available in a wide range of shell sizes, finishes, and insert arrangements.



SL61

Connectors made of aluminum alloy, with excellent reliability and robustness for In/Out applications & power supply.



SL Series - Socapex

The SL series consists of circular connectors for I/O applications in industrial and entertainment markets. The original 19 pin SOCA connector is a dedicated connector for stage lighting to power connection from dimmer boxes. The SL connectors give numerous options to choose from when it comes to backshells such as straight, right angle & mono-piece versions.



SOCAPEX Connector - 19-Pin

The original 19 Pin SOCA connector for a dimmer rack with 19 gold plated contacts, with straight or right-angle split backshell & straight mono piece backshell.



Submariner

The Submariner 5500-Series are underwater electrical connectors extremely rugged and reliable. This Dry-mate solution is available in 3 different shell sizes and a variety of configurations with wire gauges ranging from 10-16 AWG. Depth: > 6,000 meters (600 bar) Operating Temperature: -5°C to 65°C Max Operating Voltage: 600V Machine-molded Neoprene insulation material Made from 316 SS



Terrapin

Terrapin SCE2 is a range of miniature circular push-pull and latched connectors. Featuring an optional locking mechanism, multiple shell sizes with up to 37 contacts, and suitability for overmoulding, Terrapin SCE2 is the preferred choice for miniature connectors in military and other harsh environment applications.



T-Line Push-Pull Connectors

A push-pull mating connector, the T-Line incorporates a retention spring in the receptacle and a full-mating indicator band on the plug. Inserts are qualified to MIL-DTL-38999 Series III and accept standard M39029-56/58 series contacts in either size 22D or size 20 contact arrangements. Designed to reduce the size and weight of your electrical systems without sacrificing performance.



Trans-Power®

This series, offers inter-car jumpers and head-end power, ruggedized harsh environment, metal or rubber circular, press-fit coupling, high power connectors. With twenty-seven poles (inter-car jumpers) per connector and up to 400 amps possible (head-end power) with a standard operating temperature from -49°C to +43°C.



TV / CTV as per VG95319-1006; -1007; -1008

TV circular connectors with various surfaces such as aluminum, stainless steel, marine bronze, or nickel-coated composite. Approved as per MIL-DTL-38999 Series III. They are also very vibration-resistant due to the screw lock. A tear plug is also available.



TV-CTV - D38999 Series III

Amphenol Socapex MIL-DTL-38999 Series III / EN3645 connectors offer a large variety of contact arrangements and shell types, with maximum weight/space savings. 9 shell sizes (from 9 to 25) 100% scoop proof are available. We have Metal & composite shells with ROHS versions.



TV-SIM Modular thread coupling connector

These connectors with thread coupling are based on MIL-DTL-38999 (they use shell size 17) & EN4165 / VG96513 (for the inserts) standards. Offering a high liability within a harsh environment, they are sealed and resistant to shock & vibrations. They use the same installation dimensions as connectors according to MIL-DTL-38999. They are available in alternative RoHS & REACH alternatives.



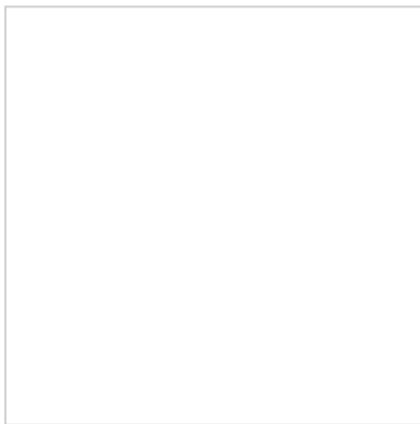
Ultra High Density (UHD) Connectors

Amphenol LTW UHD (Ultra High Density) technology enables the integration of the highest pin counts in all existing rugged circular connectors for applications space constraints but also high speed and high-reliability transmission such as M8, M12, X-Lok, Ceres, RBL, M23, etc.



UPT Connector Series

This series is based on MIL-DTL-26482 Series 1 with stamped & formed crimp contacts, IP67 rated, thermoplastic bayonet coupling, power and signal connector. With three insert arrangements ranging from 19 to 48 contacts per connector and up to 23 amps possible with a standard operating temperature from -55°C to +125°C.



VG96912 - SJT

Lightweight scoop-proof bayonet.



Circular Connectors



Warrior Grip Series

2M804 push-pull series to offer a solution designed to exceed the rigorous requirements of the US Army’s Nett Warrior program. Includes a unique mate-force rating for even quicker disconnect and selectively plated shells for improved conductivity. When paired with our 7.5 Amp Warrior Grip Contact system, you can get even more power out of your application in the same lightweight package.



X-LOK Push-Lock Connectors

Amphenol LTW's X-Lok Series connectors are presented in various sizes for power, signal, and hybrid applications for fast, simple, and reliable connections. Features a push-lock mechanism for intuitive mating with AUDIBLE and TACTILE feedback.

Алматы (7273)495-231
Ангарск (3955)60-70-56
Архангельск (8182)63-90-72
Астрахань (8512)99-46-04
Барнаул (3852)73-04-60
Белгород (4722)40-23-64
Благовещенск (4162)22-76-07
Брянск (4832)59-03-52
Владивосток (423)249-28-31
Владикавказ (8672)28-90-48
Владимир (4922)49-43-18
Волгоград (844)278-03-48
Вологда (8172)26-41-59
Воронеж (473)204-51-73
Екатеринбург (343)384-55-89

Иваново (4932)77-34-06
Ижевск (3412)26-03-58
Иркутск (395)279-98-46
Казань (843)206-01-48
Калининград (4012)72-03-81
Калуга (4842)92-23-67
Кемерово (3842)65-04-62
Киров (8332)68-02-04
Коломна (4966)23-41-49
Кострома (4942)77-07-48
Краснодар (861)203-40-90
Красноярск (391)204-63-61
Курск (4712)77-13-04
Курган (3522)50-90-47
Липецк (4742)52-20-81

Магнитогорск (3519)55-03-13
Москва (495)268-04-70
Мурманск (8152)59-64-93
Набережные Челны (8552)20-53-41
Нижний Новгород (831)429-08-12
Новокузнецк (3843)20-46-81
Ноябрьск (3496)41-32-12
Новосибирск (383)227-86-73
Омск (3812)21-46-40
Орел (4862)44-53-42
Оренбург (3532)37-68-04
Пенза (8412)22-31-16
Петрозаводск (8142)55-98-37
Псков (8112)59-10-37
Пермь (342)205-81-47

Ростов-на-Дону (863)308-18-15
Рязань (4912)46-61-64
Самара (846)206-03-16
Санкт-Петербург (812)309-46-40
Саратов (845)249-38-78
Севастополь (8692)22-31-93
Саранск (8342)22-96-24
Симферополь (3652)67-13-56
Смоленск (4812)29-41-54
Сочи (862)225-72-31
Ставрополь (8652)20-65-13
Сургут (3462)77-98-35
Сыктывкар (8212)25-95-17
Тамбов (4752)50-40-97
Тверь (4822)63-31-35

Тольятти (8482)63-91-07
Томск (3822)98-41-53
Тула (4872)33-79-87
Тюмень (3452)66-21-18
Ульяновск (8422)24-23-59
Улан-Удэ (3012)59-97-51
Уфа (347)229-48-12
Хабаровск (4212)92-98-04
Чебоксары (8352)28-53-07
Челябинск (351)202-03-61
Череповец (8202)49-02-64
Чита (3022)38-34-83
Якутск (4112)23-90-97
Ярославль (4852)69-52-93

Россия +7(495)268-04-70 Казахстан +7(7172)727-132 Киргизия +996(312)96-26-47

<https://amphenol.nt-rt.ru/> || aox@nt-rt.ru