

Алматы (7273)495-231
Ангарск (3955)60-70-56
Архангельск (8182)63-90-72
Астрахань (8512)99-46-04
Барнаул (3852)73-04-60
Белгород (4722)40-23-64
Благовещенск (4162)22-76-07
Брянск (4832)59-03-52
Владивосток (423)249-28-31
Владикавказ (8672)28-90-48
Владимир (4922)49-43-18
Волгоград (844)278-03-48
Вологда (8172)26-41-59
Воронеж (473)204-51-73
Екатеринбург (343)384-55-89

Иваново (4932)77-34-06
Ижевск (3412)26-03-58
Иркутск (395)279-98-46
Казань (843)206-01-48
Калининград (4012)72-03-81
Калуга (4842)92-23-67
Кемерово (3842)65-04-62
Киров (8332)68-02-04
Коломна (4966)23-41-49
Кострома (4942)77-07-48
Краснодар (861)203-40-90
Красноярск (391)204-63-61
Курск (4712)77-13-04
Курган (3522)50-90-47
Липецк (4742)52-20-81

Магнитогорск (3519)55-03-13
Москва (495)268-04-70
Мурманск (8152)59-64-93
Набережные Челны (8552)20-53-41
Нижний Новгород (831)429-08-12
Новокузнецк (3843)20-46-81
Ноябрьск (3496)41-32-12
Новосибирск (383)227-86-73
Омск (3812)21-46-40
Орел (4862)44-53-42
Оренбург (3532)37-68-04
Пенза (8412)22-31-16
Петрозаводск (8142)55-98-37
Псков (8112)59-10-37
Пермь (342)205-81-47

Ростов-на-Дону (863)308-18-15
Рязань (4912)46-61-64
Самара (846)206-03-16
Санкт-Петербург (812)309-46-40
Саратов (845)249-38-78
Севастополь (8692)22-31-93
Саранск (8342)22-96-24
Симферополь (3652)67-13-56
Смоленск (4812)29-41-54
Сочи (862)225-72-31
Ставрополь (8652)20-65-13
Сургут (3462)77-98-35
Сыктывкар (8212)25-95-17
Тамбов (4752)50-40-97
Тверь (4822)63-31-35

Тольятти (8482)63-91-07
Томск (3822)98-41-53
Тула (4872)33-79-87
Тюмень (3452)66-21-18
Ульяновск (8422)24-23-59
Улан-Удэ (3012)59-97-51
Уфа (347)229-48-12
Хабаровск (4212)92-98-04
Чебоксары (8352)28-53-07
Челябинск (351)202-03-61
Череповец (8202)49-02-64
Чита (3022)38-34-83
Якутск (4112)23-90-97
Ярославль (4852)69-52-93

Россия +7(495)268-04-70

Казахстан +7(7172)727-132

Киргизия +996(312)96-26-47

<https://amphenol.nt-rt.ru/> || aox@nt-rt.ru

Amphenol

Rectangular Connectors



1720 Push-Pull Connectors

The Amphenol Air LB France's 1720 push-pull connectors Series is ideal for In-Flight Entertainment Systems, Cabin Service Systems, and other interconnect system applications where shielding is not necessary.



1900SIM connectors

Amphenol Air LB France's 1900SIM is a '3 modules' rectangular connector providing versatility and high density within a small form factor. They come in a composite version for weight-saving applications and are available in plated versions for shielding applications. Many accessories and backshells also available.



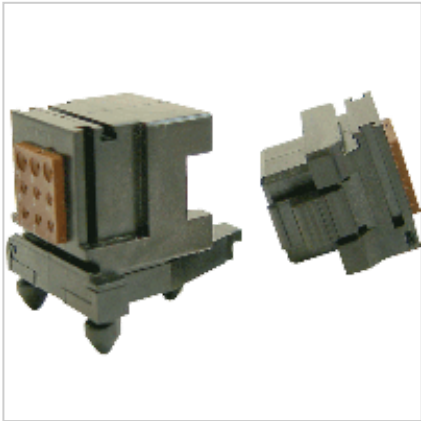
1900SIM connectors for Railway

Amphenol Air LB France's 1900SIM is a '3 modules' rectangular connector providing versatility and high density within a small form factor. They come in a composite version for weight-saving applications. Many accessories and backshells also available. Fire/Smoke/Toxicity conforms to EN45545 (HL3 R22) for embedded railway applications.



1977 Connectors

Designed for RMT applications, this Amphenol Air LB France's composite rectangular connector is available with various contact arrangements, from sizes 20 to 8 crimp contacts. It offers excellent sealing performances with its overmoulded rear grommet and interfacial seal. Configurable keying and locking posts provide 36 options. Conform to EN45545 (HL3 R22).



3357 Push-Pull Connectors

Push-pull and compact, the Amphenol Air LB France's 3357 connectors Series is ideal for In-Flight Entertainment Systems, Cabin Service Systems, and other interconnect system applications where shielding is not necessary. Available in cable-to-cable or cable-to-PCB versions.



3559 Push-Pull Connectors

Push-pull and modular, the Amphenol Air LB France's 3559 connectors Series is ideal for In-Flight Entertainment Systems, Cabin Service Systems, and other interconnect system applications where shielding is not necessary. It can be fitted with the whole range of EN4165 / SIM modules.



ARC Series™

Available in 24 and 40 positions Amphenol Sine Systems ARC Series™ Connectors are a rugged, heavy-duty, environmentally-sealed, rectangular connector series where high pin-counts are required in situations with controlled and/or uncontrolled environmental conditions. Amphenol Sine Systems ARC Series™ Connectors are currently available as In-Line Plugs and Flange Mount Receptacles.



ARINC 404

Amphenol's "AR" Series, ARINC rack and panel connectors, are designed to meet or exceed the requirements of MIL-C-81659 and ARINC Specification 404. The "AR" Series is a multi-purpose connector used in aerospace, military, and computer periphery applications. It can accommodate signal and power contacts in sizes 12, 16, 20, and 22. Coaxial contacts are available in sizes 5 and 9.



ARINC 600

ARINC 600 Connectors are a recognized standard rack and panel connector for Aircraft applications. The ARINC 600 is the successor to the ARINC 404 for many of the new avionic designs. Compared to the ARINC 404, the ARINC 600 features lower mating force contacts, increased contact count, and a front release, floating keying system. Can be filtered.



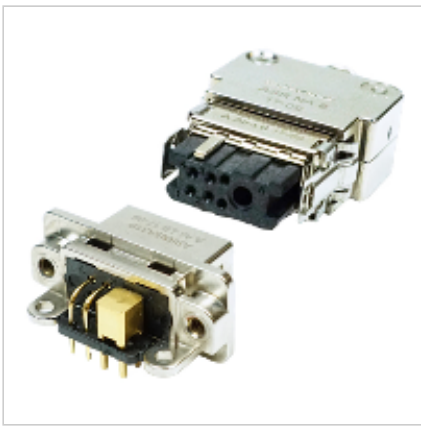
Armor IPX™

Available in 2 Sizes (Standard and Large). Amphenol Sine Systems' Armor IPX™ Family of Sealed Enclosures provides superior protection for printed circuit boards and electronic control modules in harsh environments and off-road applications. Available in two (2) sizes, as well as three (3) different material types: Clear Thermoplastic, Black Thermoplastic, or Ultem® (Transparent Amber).



A Series

Amphenol Sine Systems' A Series™ Family of sealed heavy-duty, multi-pin plastic and metal connectors includes a wide range of products serving many industries. A cost-effective solution for use with Heavy Equipment, Agricultural, Automotive, Military, Alternate Energy, and other demanding interconnect architectures.



ASR Connectors

The Amphenol Air LB France's ASR connector is a compact and easy-to-use interconnect where shielding, sealing, and space / weight-saving are prime requirements. ASR connectors use MIL-C-39029 contacts, feature a snap-locking mechanism, and are available in both male and female versions, as well as with PCB or crimp contacts.



ATM Series™

Available in 2, 3, 4, 6, 8, and 12 positions. Amphenol Sine Systems' ATM Series™ connectors are an IP68/69K rated (mated), high-performance, a cost-effective solution specifically designed for smaller AWG applications, while still maintaining the strengths of the AT Series™ product line. Our ATM Series™ connectors have been developed to be completely compatible with existing industry connectors



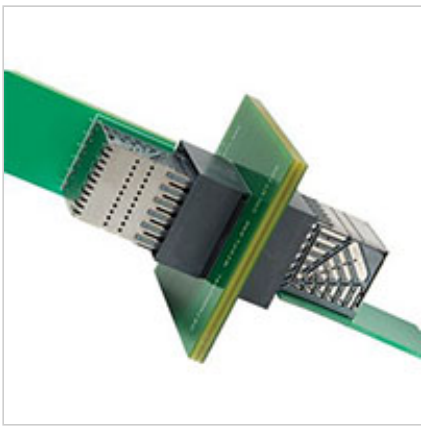
ATP Series™

Available in 2, 4, and 6 positions. Amphenol Sine Systems ATP Series™ Connectors are designed as an IP68/69K rated (mated), high-performance, cost-effective, thermoplastic solution with superior environmental seals, seal retention capabilities, and are designed for use with 10-14AWG with size 12 contacts handling up to 25A.



AT Series™

Available in 2, 3, 4, 6, 8, 12, 13 (Mixed), 15 (Mixed) and 18 positions. Amphenol Sine Systems AT Series™ Connectors are designed as an IP68/69K rated (mated), high-performance, cost-effective, thermoplastic solution with superior environmental seals, seal retention capabilities, and are designed for use with 14-22AWG with size 16 contacts handling up to 13A.



Crossbow™

Crossbow allows designers to take advantage of all the benefits associated with orthogonal mid-plane architectures as the differential pairs on each side of the mid-plane share vias creating a straight pass-through connection. This shared via approach combined with the Crossbow footprint, eliminates most electrical problems associated with the typical backplane via stub.



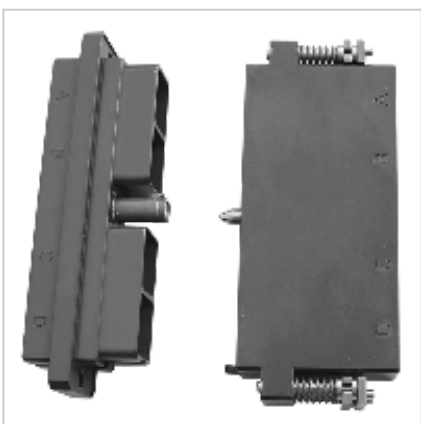
EN3545 / 1900 Connectors

The Amphenol Air LB France's EN3545 / 1900 composite rectangular connectors come with various contact arrangements from sizes 22 to 8 crimp contacts. Copper and Aluminum cable versions are available. Standard and Overmoulded rear grommet and interfacial seal. Configurable keying and locking posts provide 36 options. Especially suited for applications where shielding is not necessary.



EN4165 / SIM Connectors Series 2 (Composite)

Modular and rectangular, Amphenol Air LB France's EN4165 / SIM connectors consist of shells and modules, which together create an integrated solution for signal and power. Flexible and easy-to-use, SIM is suited for a wide range of applications. Available in composite versions for weight-saving applications, SIMs are comparable to U.S. MIL-STD-810 in performance.



EN4165 / SIM Connectors Series 2 (Metallic)

Modular and rectangular, Amphenol Air LB France's EN4165 / SIM connectors consist of shells and modules, which together create an integrated solution for signal and power. Flexible and easy-to-use, SIM is suited for a wide range of applications. Available in metallic versions for robust applications, SIMs are comparable to U.S. MIL-STD-810 in performance.



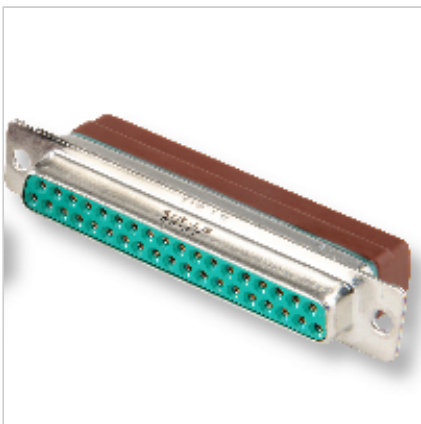
EN4165 / SIM Custom Plates

Derived from EN4165 connectors, Amphenol Air LB France's SIM plates consist of custom shells fitted with EN4165 standard modules, together creating an integrated solution. They can easily be integrated at the rear of electronic boxes, or fully replace boxes themselves. Plates are also suitable to connectorize boxes or structure parts, aiming to save parts and then simplify the supply chain.



EN4165 / SIM Monomodule Connectors

Amphenol Air LB France's EN4165 / SIM Monomodule series is a single module push-pull connector that is ideal for In-Flight Entertainment Systems, Cabin Service Systems, and all applications where shielding is mandatory. Available in lightweight composite, they can be fitted with the whole range of EN4165 standard modules. Multiple color coding, backshells, and accessories are available.



EPC Series

D-SUB connectors in the EPC series to 50 crimp/solder contacts adhere to the ASNE0237 and ABS1145 standards. They are plug compatible with standards UTE C93-425 models HE 508, MIL-C-24308, DEF 5935 pattern 110 & IEC recommendation 48B. Suitable for aerospace, telecommunications, and wherever density is required.



GbX®

Amphenol's GbX connector platform is a differential connector that provides flexible and low-cost design solutions for lower-speed applications while providing backward mate compatible upgrades to allow for up to 14 Gbps.



Harp Power

Amphenol Air LB France's Next Generation of high-density modular connector offering a direct Harness-to-Board connection. High power version offers 4 contacts 150Amps (gage 4) + 6 interlock contacts (gage 22). Also available in full size 22 signal contacts version, or mixed 22/20/8 contacts sizes.



heavy|mate® | Heavy Duty Rectangular Connectors

The connectors of the heavy|mate® - C146 series - also called heavy duty rectangular connectors - are modular connector lines consisting of hoods and housings, inserts and contacts that are designed for applications in harsh industrial environments. Highly cost-effective processing is possible by using stamped crimp contacts at consistently high-quality connections.



ix Industrial™ IP20 Connectors

ix Industrial™ connectors enable IoT connectivity for Ethernet and other Industrial protocols through all levels of an operation from the Enterprise/Cloud to the sensors/actuators at the factory floor. These 10mm pitch connectors featuring 2-point metal latches are just 25% of the size of an RJ45 connector, and as such allow much greater port density and mating security.



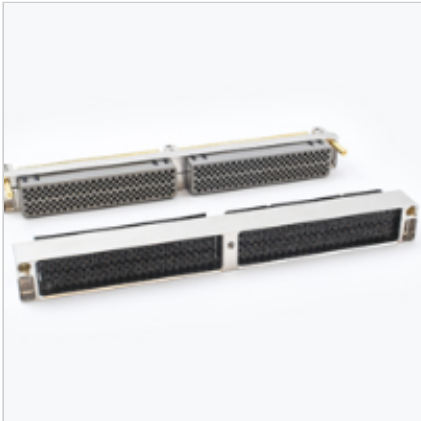
LMD and LMS

Designed to provide flexibility in the assembly of wire harnesses that are used in instrumentation and avionic control environments. The modular design of the LMD provides rack and panel or cable to cable attachment. Supplementing the LMD connector family, the LMS in-line splice connector; a low-cost interconnect that incorporates the LMD modules and contacts.



Low Cost LRM

Low-cost LRM variation for cost savings from traditional LRMs. Family of connectors designed for Secondary Power Distribution Systems.



LRM Connectors

Line replaceable module connectors are for motherboard/daughterboard chassis enclosures and have multiple options for contact count and termination methods. The utilization of Brush contacts with low mating force, ESD shields for Level II Maintenance, and lateral float for ultimate cold wall heat dissipation, make this board-to-board mating scheme the best solution for ruggedized chassis.



Magnetic Jack (RJMG) - 1x1

RJMG series offers a wide variety of fully RoHS compliant Magnetic Modular Jacks for RJ45. Both right angle and vertical through-hole types are offered in a single port with tab-up and tab-down options. This series comes with LED options and is compatible with Power over Ethernet (PoE). RJMG series is offered with both shielded and EMI options, which provides enhanced protection.



Magnetic Jack (RJMG) - 1xN

RJMG series offers a wide variety of fully RoHS compliant Magnetic Modular Jacks for RJ45. The right-angle through-hole type is offered in a 1xN (1x2, 1x4 through 1x8) port with tab-up and tab-down options. This series comes with LED options and is compatible with Power over Ethernet (PoE). RJMG series is offered with both shielded and EMI options, which provides enhanced protection.



Magnetic Jack (RJMG) - 2xN

RJMG series offers a wide variety of fully RoHS compliant Magnetic Modular Jacks for RJ45. The right angle and through-hole type are offered in 2xN (2x1, 2x2, 2x4, 2x6, and 2x8) port with tab-up and tab-down options. This series comes with LED options and is compatible with Power over Ethernet (PoE). RJMG series is offered with both shielded and EMI options, which provides enhanced protection.



Magnetic Jack (RJMG) - Stacked

RJMG series offers a wide variety of fully RoHS compliant Magnetic Modular Jacks for RJ45. The right angle through hole type is offered in RJMG Stacked USB 2.0/3.0. This series comes with LED options and is compatible with Power over Ethernet. RJMG series is offered with both shielded and EMI options, which provides enhanced protection. Gold plating option is also available for the contact area.



MIL-DTL-55302 Low Mating Force Connectors

Low Mating Force Rectangular Connector series is one of the highest performing board-level connectors in the world with proven performance on the ground, in the air, and at sea. Utilizes the B³ brush contact system known for low mating force, stable electrical performance in high vibration, and extended service life.



Millipacs® High Temperature Backplane Connectors

Amphenol's Millipacs® is a 2.00mm grid Interconnection system in a hard metric configuration designed in accordance with IEC 917, IEC 61076-4-101, Telecordia GR-1217-CORE standards and fulfills Compact PCI bus architecture. Millipacs® high-temperature series addresses the market requirements for Backplane connectors compatible with higher operating temperature applications.



MMA

MMA combines the best features of ARINC 600 with the sealing capabilities of M83527 using shell seal, face seal, and grommet and provides them in a smaller package. MMA, MMB, MMC, MMD are different configurations. Modular inserts are effective for separating signal and power contacts while providing ease of installation and customization. Standard and custom versions are available.



Modular Jack - Right Angle - High Speed

Our Right Angle High-Speed line of modular jacks (1 to 10Gb/s) meet Cat5e, Cat6, and Cat6A specification performance levels per EIA-568-C.2. All modular jacks support PoE Types 1 to 4 and are RoHS and IEC 60603-7 compliant.



Modular Jack - Right Angle - Standard Speed

Our Right Angle Standard Speed line of modular jacks (< 1Gb/s) are Cat3 and Cat5 compliant. All modular jacks support PoE Types 1 to 4 and are RoHS and IEC 60603-7 compliant.



Modular Jack - RJ45

FCI Basics Modular Jacks include single and multi-port solutions that are widely used in Telecom, Data, Networking, and Home Entertainment markets for various applications. Modular Jacks Cat 3 supports the transmission of 16Mbps signals targeted to phone, modem, POS terminal machines and Cat 5 supports the transmission of 100Mbps signals targeted to switch, router, hub, etc.



Modular Jack - Rugged

Rugged RJ Panel Mount connector IP67 Sealing. Ruggedized RJ connectors with die-cast housings and IP67 sealing for Harsh Environment applications, provide reliable performance in extreme conditions for the most demanding applications and mate with standard RJ plugs.



Modular Jack - Vertical - High Speed

Our Vertical High-Speed line of modular jacks (1 to 10Gb/s) meet Cat5e, Cat6, and Cat6A specification performance levels per EIA-568-C.2. All modular jacks support PoE Types 1 to 4 and are RoHS and IEC 60603-7 compliant.



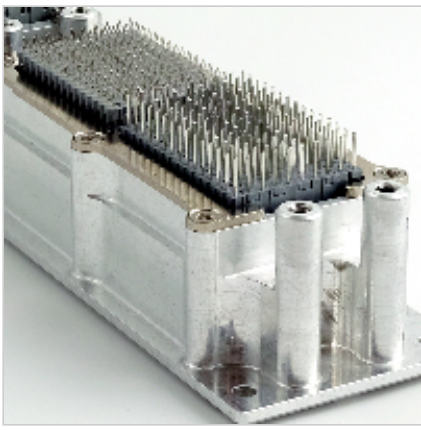
Modular Jack - Vertical - Standard Speed

Our Vertical Standard Speed line of modular jacks (< 1Gb/s) are Cat3 and Cat5 compliant. All modular jacks support PoE Types 1 to 4 and are RoHS and IEC 60603-7 compliant.



NETBridge™ Automotive Ethernet Connector System

NETBridge™ Automotive Ethernet Connector System is designed for the automotive environment and can transmit up to 100Mbit/s and 1Gbit/s according to IEEE 100BASE-T1 and 1000BASE-T1. These automotive-grade Ethernet connection system uses twisted-pair cables to transmit data. NETBridge™ is developed in accordance with USCAR-2, VDAAK LV214, and ISO 8092-2.



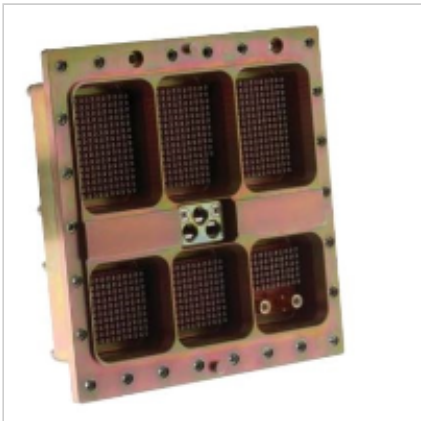
Next-Gen ARINC 600

The NextGen Arinc 600 is available in PCB tail or press-fit options. The stamped and formed contact is a lighter weight and lower-cost option to the standard contact without compromising functionality. The stamped and formed is available for size 22 contacts and as well as a size 8 quadrax press-fit. A 400 contact size 2 Arinc will be 25% lower weight and 25% lower cost.



PRM Series™ Panel Rack Mount

Amphenol Sine Systems' PRM Series™ (Panel Rack Mount) Connectors, available in both Plugs and Receptacles, are a quick-connect power connector solution for use in panel rack mount network applications. Our quick-connect design enables denser installations, faster deployments, and upgrades.



R27

The Amphenol R27 Series is a robust rectangular connector designed to meet or surpass all the requirements of MIL-DTL-83527 and EN 3682. This series is particularly well suited for military and commercial aircraft applications in harsh environments. Connectors, shells, inserts, termination modules, and contacts are sold separately or as full assemblies. Can be filtered. See our 485 series.



R39 - Rectangular 38999

Amphenol's rectangular 38999 connector soars to meet higher expectations. It is dynamically engineered for a changing world. • Rectangular for space savings • Low profile • High density 127 position inserts or mixed inserts with power, RF, or fibre-optic available • Blind mate • Rugged • Uses same contacts as standard 38999



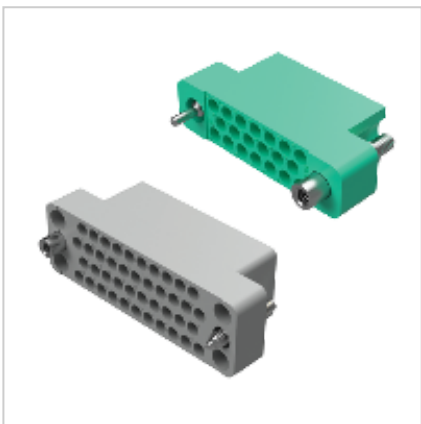
R58

The Amphenol R58 series are high-performance environment-resistant, rectangular connectors designed to be compatible with all MIL-DTL-83733 connectors and Amphenol Canada is interchangeable with all M83733 connectors and the only qualified supplier for the Mil-Spec JN1122. Can be filtered. See our 458 series.



Rack and Panel Connector

Brush Rack and Panel connector series utilizes Amphenol's durable and reliable B3 contact system in a rugged, non-floating Rack and Panel connector. Included in this series are digital and power/digital "hybrid" insert arrangements. The hybrid series utilizes Amphenol's high-performance RADSOK® power contacts along with Amphenol's proven B3 contact.



Rectangular

Positronic rectangular series connectors come with standard & high-density versions and are best for rack & panel applications or for applications with direct current, low-frequency analog, or digital high-speed data. Select products are certified to MIL-DTL-28748 and SAE AS39029.

Rectangular Connectors



RFM
Blind mate modular floating rack connector. NF F 61-032 qualified product.



RFM Power
Blind mate modular floating rack with high voltage contacts.



RFM Quadrax
Blind mate modular floating rack connector with Quadrax contacts for high-speed applications.



RFM Series

Amphenol Socapex offers RFM Series, Rack & Panel connectors, featuring blind mate and modular floating. RFM connectors are compliant with EN45545 & NF F 61-032 standards. RFM connectors have been used for many years by OEMs for harsh environments and in railway applications for security systems. The robustness and realignment capability of RFM connectors deliver also durability and reliability.



RJ11 Modular Jack Connector

FCI Basics RJ11 is the most commonly recognized registered jack. It is used as a standardized telecommunication network interface, for connecting voice and data equipment to a telecommunications carrier in single-line telephones. FCI Basics RJ11 is designed to meet Category 3 (Cat 3) cable performance. Cat 3 cable features a 10Mb/s transfer rate and supports a transmission speed of 16MHz.



R-SATA

R-SATA connector is the primary internal storage interconnect for desktop and mobile PCs, connecting the system to peripherals such as hard drives, solid-state drives, optical drives, and removable magnetic media drives. The R-SATA supports SATA 3.0 protocol, delivering 6.25 Gb/s data rates & beyond. Amphenol's R-SATA connector utilizes a Micro-Hyperboloid contact with proven performance.



SIM Connectors Series 3

Scoop-proof, modular and rectangular, Amphenol Air LB France's EN4165 / SIM series 3 consists of shells and modules, which together create an integrated solution for signal and power. Flexible and easy-to-use, SIM is suited for a wide range of applications. Available in metallic versions for robust applications, SIM are comparable to U.S. MIL-STD-810 in performance.



SIM Marine Bronze

Amphenol Air LB France's Marine Bronze SIMs are derived from the legacy EN4165 metallic connectors. It consists of shells in Bronze and overmolded EN4165 modules, which together create an integrated solution for signal and power. With 2000 hours of salt spray withstanding, Marine Bronze SIM connectors are suited for a wide range of Marine applications.



SIM QR (Quick Release)

Based on legacy EN4165 connectors, Amphenol Air LB France's SIM QR features a quick disconnection system. Fitted with modules selected from an extensive range of overmoulded EN4165 / SIM modules providing multiple contacts sizes and arrangements offering best-in-class dielectric and sealing performances. For Power & Signal contacts.



SIM Splices for Mil/Aero

Amphenol Air LB France's modular composite splice provides a reliable and simple connection between two EN4165 / SIM modules. Available with or without cable clamp, and/or flange, the SIM splice can be fixed on/under a structure or Feed-through. It can be fitted with the whole range of EN4165 / SIM modules.



Single Pair Ethernet (SPE) IP20 Connectors

Single Pair Ethernet (SPE) connectors for Industrial applications bring direct Ethernet connectivity to peripheral devices like sensors, actuators, and vision system cameras that operate at speeds up to 1Gb/s. SPE eliminates slow expensive and complex Fieldbus protocols and connections by simplifying and standardizing existing and new industrial network systems.



Solaris

Solaris is a small, plastic, easy-to-use rectangular connector designed specifically for low and medium power applications. Solaris’ spring-loaded slide lock mechanism is a snap to use - simply push to lock and slide to unlock. The slide lock provides convenient single-handed & tool-less mating, eliminating the Foreign Object Debris (FOD) found in typical screw mount D-Subs.



Tru-Loc®

This series, utilizing RADSOK® technology is ruggedized for harsh environments, thermoplastic rectangular, integrated latch push/pull, signal connector for use in high vibration areas. With three insert arrangements ranging from 2 to 6 contacts per connector and up to 13 amps possible with a standard operating temperature from -40°C to +150°C.



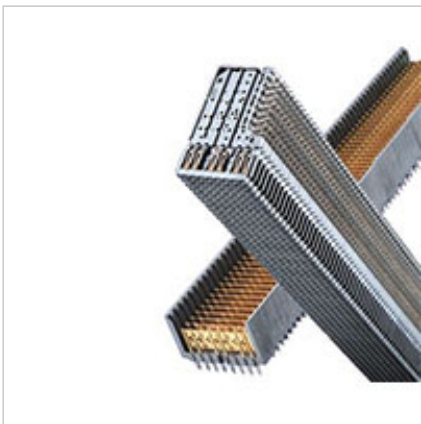
Tru-Loc® Splitter

This product is used in a CANbus network to convert a six-circuit input into two equal, yet separate sets of power and signal output, ruggedized for harsh environments, thermoplastic rectangular, integrated latch coupling, power and signal splitter. With a 6-way contact insert arrangement and up to 13 amps possible with a standard operating temperature from -40°C to +150°C.



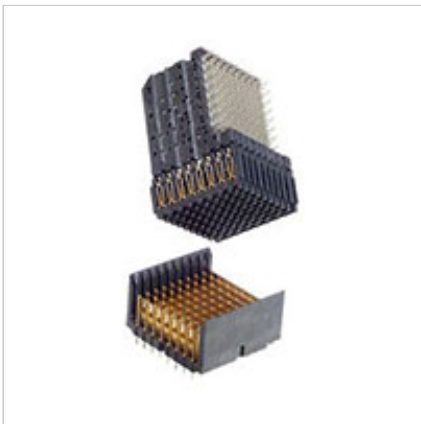
VerIO™ Connector

VerIO™ Connector is a versatile, robust, and compact I/O system featuring multiple standard connector interfaces such as RJ45, PoE (Power over Ethernet), Signal, Power, and Hybrid. It is easy to install and operate with a swift push-pull type movement. VerIO connector is ideal for industrial applications as well as harsh indoor or outdoor environments.



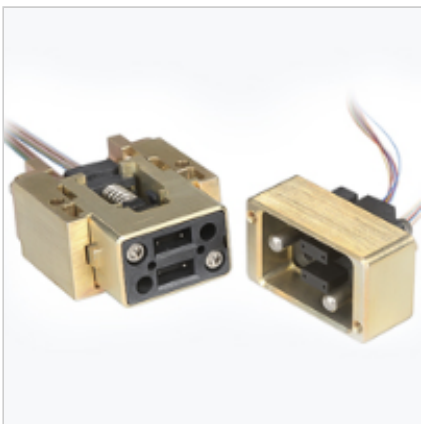
VHDM-HSD™

VHDM-HSD™ is a shielded, high-density, high-speed press-fit connector system optimized for differential pair architectures. The flexible, modular design of the product allows for the differential performance of our VHDM-HSD™ connector to be combined on the same rear organizer as the VHDM® connector which is a single-ended solution.



VHDM®

Amphenol's VHDM® connector's modular format and breadth of components provide unmatched design flexibility. VHDM® can be combined with VHDM-HSD™ to incorporate both single-ended and differential signaling within the same connector. VHDM® derivatives provide an upgrade path to 25 Gb/s with backward mate compatibility to allow for scale as needed.



VITA 66.1 and 66.4

Ruggedized blind-mate optical MT Module/Backplane connector systems designed to meet the VITA 66.1 and 66.4 open architecture specifications. These products can be utilized in VPX systems as defined per VITA 46 or as standalone blind-mate optical connector solutions. They provide reliable high-speed connections for the most extreme commercial and military environments.

Алматы (7273)495-231
Ангарск (3955)60-70-56
Архангельск (8182)63-90-72
Астрахань (8512)99-46-04
Барнаул (3852)73-04-60
Белгород (4722)40-23-64
Благовещенск (4162)22-76-07
Брянск (4832)59-03-52
Владивосток (423)249-28-31
Владикавказ (8672)28-90-48
Владимир (4922)49-43-18
Волгоград (844)278-03-48
Вологда (8172)26-41-59
Воронеж (473)204-51-73
Екатеринбург (343)384-55-89

Иваново (4932)77-34-06
Ижевск (3412)26-03-58
Иркутск (395)279-98-46
Казань (843)206-01-48
Калининград (4012)72-03-81
Калуга (4842)92-23-67
Кемерово (3842)65-04-62
Киров (8332)68-02-04
Коломна (4966)23-41-49
Кострома (4942)77-07-48
Краснодар (861)203-40-90
Красноярск (391)204-63-61
Курск (4712)77-13-04
Курган (3522)50-90-47
Липецк (4742)52-20-81

Магнитогорск (3519)55-03-13
Москва (495)268-04-70
Мурманск (8152)59-64-93
Набережные Челны (8552)20-53-41
Нижний Новгород (831)429-08-12
Новокузнецк (3843)20-46-81
Ноябрьск (3496)41-32-12
Новосибирск (383)227-86-73
Омск (3812)21-46-40
Орел (4862)44-53-42
Оренбург (3532)37-68-04
Пенза (8412)22-31-16
Петрозаводск (8142)55-98-37
Псков (8112)59-10-37
Пермь (342)205-81-47

Ростов-на-Дону (863)308-18-15
Рязань (4912)46-61-64
Самара (846)206-03-16
Санкт-Петербург (812)309-46-40
Саратов (845)249-38-78
Севастополь (8692)22-31-93
Саранск (8342)22-96-24
Симферополь (3652)67-13-56
Смоленск (4812)29-41-54
Сочи (862)225-72-31
Ставрополь (8652)20-65-13
Сургут (3462)77-98-35
Сыктывкар (8212)25-95-17
Тамбов (4752)50-40-97
Тверь (4822)63-31-35

Тольятти (8482)63-91-07
Томск (3822)98-41-53
Тула (4872)33-79-87
Тюмень (3452)66-21-18
Ульяновск (8422)24-23-59
Улан-Удэ (3012)59-97-51
Уфа (347)229-48-12
Хабаровск (4212)92-98-04
Чебоксары (8352)28-53-07
Челябинск (351)202-03-61
Череповец (8202)49-02-64
Чита (3022)38-34-83
Якутск (4112)23-90-97
Ярославль (4852)69-52-93

Россия +7(495)268-04-70 Казахстан +7(7172)727-132 Киргизия +996(312)96-26-47

<https://amphenol.nt-rt.ru/> || aox@nt-rt.ru