



AGE Power Connectors

AGE96929 its single pole high Ampere low voltage reverse bayonet connector meets the requirements of VG96929 standard. Shell design & mating dimensions based on VG95234 standard. Insulator split type with two-piece construction retained with constant spring force which allows exchanging crimp contacts multiple times.



AirMax® Power Connectors

Hard Metric High Power connectors are a perfect complement to Amphenol's ExaMAX®, AirMax®, ZipLine®, and Millipacs® signal connectors. These power connectors mount alongside their signal counterparts and are used in applications where bulk current is delivered by backplane or midplane to power-consuming components on a mating daughter card.



AMHTC Series Connectors

Amphenol "AMHTC" high tension connector series for railway vehicle installable power distribution systems, offers the ultimate in safety and reliability under the most severe operating conditions. The AMHTC series connectors allow the user to connect electrical equipment quickly with ultimate safety.



Amphe-309 Pin and Sleeve

Pin & Sleeve IEC 60309 UL listed. The Amphe-309 consists of both IP44 (splash-proof) and IP67 (Water Proof) devices from 16 A up to 125 A, from a simple plug to customer-specified combination units. The series range covers all clock positions in use for low profile, watertight, and Heavy Duty solutions. EC 603 09-1 & 2, EN 60 309-1 & 2, BS 4343-2 1992, and UL 1682 & 1686.



Amphe-PD™

This series, utilizing RADSOK® socket contact technology, is a general duty, touch-proof, thermoplastic rectangular with integrated latch push-pull coupling high power connector. Two poles per connector and up to 120 amps possible with a standard operating temperature from -55°C to +125°C.



Amphe-Phase

Amphe-Phase is a High Current Single pin connector with a smart design to keep performance and safety as a top priority keeping the solution price competitive. Finger Proof Protection against electric shock (IP2X) on both sides of Source and Drain and have a bayonet mechanical locking system requiring a key to unlock for additional safety.



ASGP

ASGP is a power connector specially designed for rail vehicles receiving maintenance in the garage repair station when high circuit power is cut off. This IP67 rated connector has 4pcs of 18mm Radsok for power and 6pcs of 3.6mm spring wire sockets for signal. ASGP offers a wide range of current up to 500A and its rated voltage is 500V.



ASGTC

ASGTC is an environmental cylindrical reverse bayonet coupling connector with self-locking system, which guarantee a fast locking and unlocking. Designed for Railway and Mass Transit industry. GTC family is a high-performance, rugged sealed connector with waterproof IP67 rated, robust shells for high-temperature resistance and resistant to vibrations & shocks.



ASRC HV

ASRC HV series connectors are high voltage and high current heavy rectangular connectors. Up to 700A per contact and voltages up to 4000V. A wide range of inserts for signal and power transmission. The robust metal housing offers excellent EMC ratings and guarantees IP68/IP69K leakage proof.



ASVG

ASVG is an enhanced version of the MS5015 standard connector but remains completely intermateable with the MS5015 reverse bayonet connectors. • In conformity with the French railways standard NFF 61030. • The insulator is in hard thermoplastic, classified UL94V0. • Rated current from 13A to 150A. • Rated voltage from 200V to 900V. • IP67



BarKlip® BK100 I/O

BarKlip® BK100 I/O provides a convenient method of distributing up to 100A between busbars, cables and circuit boards. It features 12 fully independent cantilevered beams, providing a true compliant spring to adjust for variations in busbar alignment and surface finish. The ultrasonically welded connection between the wire and contact increases the efficiency and reliability of current transition.



BarKlip® BK100 I/O for EV Charging

BarKlip® BK100 I/O provides a convenient method of distributing up to 100A between busbars, cables, and circuit boards. It features 12 fully independent cantilevered beams, providing a true compliant spring to adjust for variations in busbar alignment and surface finish. The ultrasonically welded connection between the wire & contact increases the efficiency and reliability of current transition.



BarKlip® BK150 Connector

LOW RESISTANCE BUSBAR CONNECTOR The BarKlip® BK150 connector features 10 independent conducting beams that maintain contact with the mating busbar in common misaligned positions, therefore lowering resistance connectors.



BarKlip® BK200 I/O

BarKlip®BK200 I/O provides a convenient method of distributing up to 200A between busbars, cables and circuit boards. It features 14 fully independent cantilevered beams, providing a true compliant spring to adjust for variations in busbar alignment and surface finish. The ultrasonically welded connection between the wire and contact increases the efficiency and reliability of current transition.



BarKlip® BK200 I/O for EV Charging

BarKlip®BK200 I/O provides a convenient method of distributing up to 200A between busbars, cables, and circuit boards. It features 14 fully independent cantilevered beams, providing a true compliant spring to adjust for variations in busbar alignment and surface finish. The ultrasonically welded connection between the wire and contact increases the efficiency and reliability of current transition.



BarKlip® BK300 Connector

The BarKlip® BK300 connector features 14 independent conducting beams that maintain contact with the mating busbar. BK300's contacts are plated with Amphenol's proprietary silver-based AGT® plating technology to further reduce contact resistance and eliminate fretting corrosion commonly found in tin-plated connectors.



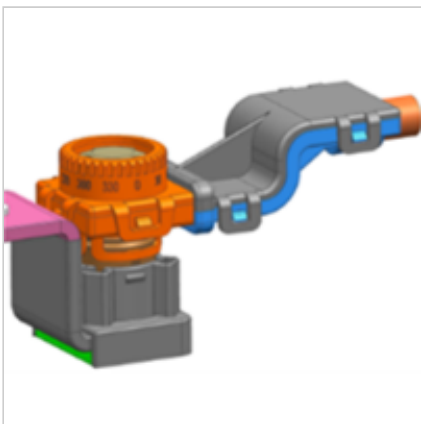
BarKlip® XP Connectors

HIGH POWER AND LOW RESISTANCE BUSBAR CONNECTOR Amphenol's BarKlip® XP connectors feature independent points of contact that provide overall lower resistance and greater overall efficiency. BarKlip® XP series is capable of distributing anywhere from 150 to 1000A of power to busbar power distribution applications.



BarKlip® XP Connectors for EV Charging

HIGH POWER AND LOW RESISTANCE BUSBAR CONNECTOR FOR EV CHARGING STATIONS Amphenol ICC's BarKlip® XP connectors feature independent points of contact that provide overall lower resistance and greater overall efficiency. BarKlip® XP series is capable of distributing anywhere from 150 to 1000A of power to busbar power distribution applications.



BATSOK

HV/HP connector for applications >60V. The connectors can be flexible or rigid and are available in various cross-sections. Also known as battery module connector.



Charge Inlet China / Asia

Charge inlets and assemblies for eMobility applications. There is a wide portfolio of Charge Ports available supporting all major interfaces like GB/T, IEC Type 1 & Type 2, DC Combo, or DC Fast Charging. Special features including locking actuator or LED Charge indicator lights are available as well as related charge plugs and cable assemblies.



Class L Connectors

Heavy-duty cylindrical connector for higher Amperage requirements suitable for Military & Industrial application, The rigid configuration & control assures correct interconnection of an electrical circuit for maximum safety & reliability. Connectors are QPL qualified & meet the requirement of the MIL-DTL-22992 military standard.



Class L Connectors, MIL-DTL-22992

MIL-DTL-22992 Class L heavy-duty connectors are the largest size mil-spec cylindrical connectors. Current range from 40 to 200 amperes. Direct current or single/three-phase, 60/400 Hertz alternating current. Resistance to the operating environments of heat, moisture, vibration, high impact, and immersion. Automatic grounding for safety.



CONEC IP67 Power Bayonet Series

The connector series is designed for industrial cable connections with IP67 protection and the bayonet locking allows a quick, simple, and robust connection in harsh environments. The 2-pos. version is mainly designed for DC use up to max. 48 V DC and the 3-pos. version utilizes a pre-mating contact for AC up to max. 250 V AC with protective earth contact (PE).



CONEC M12x1 Series L-Coding

The overmoulded M12 L-coded connectors require 30% less installation space compared to a 7/8" connector. Due to the high current carrying capacity of 16 A with a strand cross-section of 2.5 mm², they are also able to ensure the power supply of devices via a miniaturised interface. Also available: sockets & field attachable connectors.



Connectors for Electric Vehicles

Discover our variety of high voltage connectors for electric vehicles. Each has a safety interlock system and is waterproof. Our experience for all kinds of products in High Voltage and High Current applications, is a driver for a sustainable future with more green propulsion systems. We are regularly expanding our HV portfolio to meet market trends or to develop specific solutions for customers.



CoolPower® SDM Connectors

CoolPower® Slim Drawer Mini (SDM) Connectors offer a high level of mating configuration flexibility, current density, and a thin profile making it ideal for compact board-to-board power interconnects. The CoolPower® SDM series is available with two or four power lines and boasts up to 318A per linear inch in a footprint of only 5.6mm x 14mm.



CoolPower® SDM Connectors for EV Charging

CoolPower® Slim Drawer Mini (SDM) Connectors offer a high level of mating configuration flexibility, current density, and a thin profile making it ideal for compact board-to-board power interconnects. The CoolPower® SDM series is available with two or four power lines and boasts up to 318A per linear inch in a footprint of only 5.6mm x 14mm.



CoolPower® Slim Drawer

Amphenol's CoolPower® Slim Drawer Series is configurable to accommodate various combinations of power and signal contacts and a number of mounting and termination options. CoolPower® Slim Drawer can deliver up to 60A per pin and provides an ultra-low end-of-life contact resistance of just 0.4mΩ. Additional features include blind-mating, sequential mating, and true hotplug capabilities.



CoolPower® Slim Drawer for EV Charging

Amphenol ICC's CoolPower® Slim Drawer Series is configurable to accommodate various combinations of power and signal contacts and a number of mounting and termination options. CoolPower® Slim Drawer can deliver up to 60A per pin and provides an ultra-low end-of-life contact resistance of just 0.4mΩ. Additional features include blind-mating, sequential mating, and true hotplug capabilities.



Customized Connectors

Positronic stands alone in our ability and desire to provide custom connectors. From basic modifications to clean-sheet designs, we are experts in the design and development of custom solutions.



D38999 Power

For high power transmissions.



DIN Power

FCI Basics DIN Power connector offers contacts with medium power of 5.5A and high power of 15A range. This series includes connectors for board-mount or rack applications and is available in vertical receptacle and right-angle header mating combination. A mix of both medium and high power is also available.



Dragonfly

Dragonfly connectors are designed with a versatile combination of power and signal solutions in a compact design. Dragonfly series also offers PCB mount, panel mount and cable connections in a small form factor design utilizing high-reliability, high-retention and high cycle life precision machined contacts.



EazyPwr™ IP67 Field Installable Connector

EazyPwr™ IP67 field-installable connector provides the next generation of custom power with up to 125A per contact. The metal latching system ensures a reliable connection between the mated pair. The water-tight plug and screw-on cap can be removed easily. Wide range of customizable components to fit specific application needs. Rubber sealing provides IP67 protection.



ECTA 133 Series

The ECTA 133 metal connector with a push-pull locking system is used wherever it is necessary to insert it safely and blindly. It is particularly suitable for indoor use, in industry, in railways, in apparatus and vehicle construction and diagnostics. Increased mating cycles, pressure-tight sockets, fiber optic contacts are available in many polar patterns.



ECTA 544 Series

The ECTA 544 plastic connector with a push-pull locking system can be used everywhere where one must connect securely and blindly. It is especially suitable for indoor areas, industry, diagnostics, and laboratories. Available in black, gray, and yellow colors.



eHPCE® Enhanced High Power Card Edge Connector

CLASSIC HPCE® WITH ENHANCED PERFORMANCE eHPCE® connector offers a 15% increase in power density with the same footprint as classic HPCE®. The all-new power contact design offers lower contact resistance and higher current carrying capacity compared to classic HPCE® connectors. eHPCE® connectors are designed to extend the life of power supplies using card edge output power connectors.



eMobility Products China / Asia

Interconnect products for eMobility applications. HV / HP Connectors, Interfaces, Cable Assemblies, Bus Bars, MSD, Vehicle Inlets, PDUs, customized interconnect solutions.



EMP

Motor Power connector provides a high voltage and heavy current connection in RMT application, It's an IP67 rectangular connector, and with high strength stainless steel screw/nut mechanism for application in harsh environments, compliant with EN50124 and NFF61. EMP series product has a wide range of current up to 500A and 3000V max high voltage.



ePower

This series, utilizing RADSOK® socket contact, HVIL contact, and EMI shielding technologies in a ruggedized harsh environment, metal rectangular, push/pull coupling, high power connector. With two or three contacts per connector and up to 700 amps possible with a standard operating temperature from -40°C to +125°C.



ePower-Lite

This series, utilizing RADSOK® socket contact, HVIL contact, and EMI shielding technology in a ruggedized harsh environment, thermoplastic rectangular, push/pull coupling, high power connector. With two, three, or four contacts per connector and up to 70 amps possible with a standard operating temperature from -40°C to +125°C.



EV Series Power connectors

EV series connectors specially designed for connecting power cables within mobile & stationary power supplies. Power supply may be used with vehicle drives systems or stationary power. The IP2X or TUV finger-proof design allows much greater flexibility when connectorizing "Always Hot" system such as battery pack.



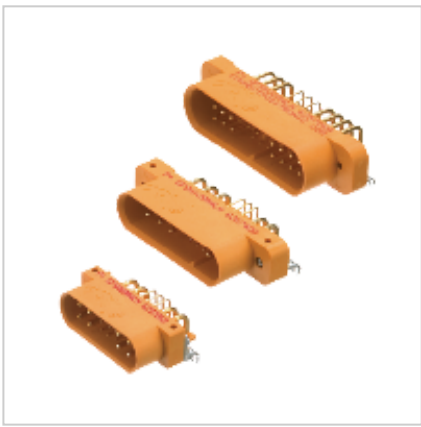
EX-309

Pin and Sleeve Certified Interlock and Plug for Hazard locations. Power options EX HAZLOC certified 16A, 32A, 63A, 125A for EX zone 1, 2, 21, 22 II 2 GD. Ex db eb IIC T* Gb. Ex tb IIIC T80°C Db IP66.



GCA Circular Connector

GCA circular connector with bayonet and screw locking, plug-compatible and crossable with CA-COM, as per MIL-C-5015 and VG95234, crimp and solder contacts. Standard surfaces for this series are nickel (RoHS compliant). In non-conductive Version or in stainless steel: salt spray test > 1000 hours.



GFSH

The GFSH series is a mixed density power connector, ideal for applications that require blind mating in a small package. Multiple contact sizes facilitate the mixing of AC/DC input, signal and DC distributed output in a single package.



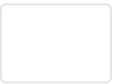
GG

The GG is a unique connector series for two reasons. First, it boasts the ability to carry the most power in a single package. Second, it is a modular connector with a fixed envelope. GG connector is an extreme power connector capable of up to 200 amps per contact.



Ground Power Receptacle

This Amphenol Air LB France's Power feed receptacle connector is originally installed on commercial airliners and is fully intermateable with Ground-based SAE AS 25486 power plugs installed around the world. It powers the aircraft while docked at the gate.



Power Connectors



GROUNDSOK

HP connector for applications <60V. The connectors in the GROUNDSOK family are exclusively ground connections. These are available in sealed and unsealed versions.



H4

This series, a UL6703 1500V DC / IEC62852 1000V DC approved inline and panel mount solar photovoltaic thermoplastic power connector with integrated latch coupling connector for ruggedized harsh environments (IP68 1 hr/1 m mated). With a single-pole insert arrangement ranging from 14 AWG to 10 AWG contact per connector and up to 30 amps possible.



H4 Plus

This series, similar to the H4 with UL 6703 / IEC 62852 approvals at 1500V DC, enhanced materials to increase performance levels of chemical resistance, ingress protection (IP68 24h/1 m mated), damp heat (2000 hrs), thermal cycle (800 cycles), humidity freeze (60) cycles, and lower contact resistance. A single-pole ranging from 14 AWG to 8 AWG contact per connector and up to 50 amps possible.



HCl® Connector System

The HCl® connector system anticipates the continued trend toward increased system power demands that are driving the need for increased power density. The HCl® connector system is designed to address requirements that extend beyond the capability of Amphenol's proven PwrBlade® connector system, the industry standard for DC power supply interfaces and power distribution.



HCl® High Power Connector

The HCl® High Power backplane/midplane connector series addresses applications demanding additional power at the interface between a daughter card and a backplane or midplane in chassis-based equipment platforms. HCl High Power modules are rated for up to 113A per contact without exceeding a 30°C temperature rise in still air.



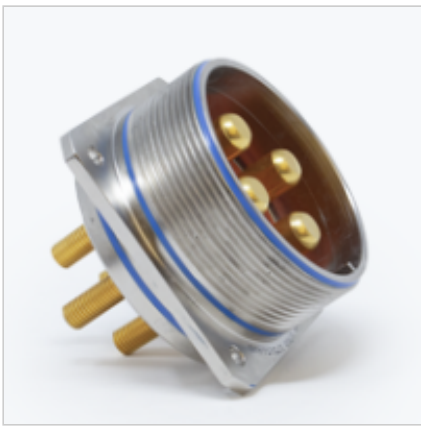
HEAVYSOK

HV/HP connector for applications >60V and aluminium housing. All connectors are sealed and equipped with EMC shielding. The aluminum housing ensures a robust structure in the vehicle, it can withstand higher temperatures and can dissipate high currents. The HEAVYSOK connectors are available with various codings.



High Power 38999

High Power 38999 incorporates RadSok, Temper-Grip, or standard high power contacts. Paired with the proven performance of the MIL-DTL-38999 connector series, High Power 38999 offers a variety of tooled arrangements specifically designed to carry high current (70 to 250 amps per contact, 240 to 1000 amps per connector).



High Power 5015

Features high-current RadSok or Temper Grip socket contacts for a current-carrying capacity increase of up to 40%. Utilizing two proven connector mating designs (Matrix 5015 and MGT-5015) and a host of new contact termination methods, the High Power Series offers custom connector performance in a standard catalog offering.



High Voltage 38999

An expansion of the MIL-DTL-38999 series to provide solutions for next-generation aircraft power requirements. Future power distribution architecture is moving toward higher voltages above what standard connectors are designed to accommodate. Amphenol HV38999 has been tested up to 1200 VAC / 1500 VDC* to remain partial discharge free @ 50,000 ft.



HPCE® Board to Board Connector

The HPCE® BTB is a board-to-board high power connector for demanding applications requiring high linear current density and small connector size. It is part of Amphenol's HPCE® series family together with HPCE and HPCE cable assembly. HPCE® BTB is ideal for next-generation 1U/2U servers, storage enclosures, telecommunications equipment, and datacom/networking equipment.



HPCE® High Power Card Edge Connector

The High Power Card Edge (HPCE®) connector is a next-generation power card edge connector for demanding applications requiring high linear current density and low power loss. HPCE offers a low profile height (7.50mm) and is based on very cost-effective and highly reliable stamped-and-formed power contact technology similar to other power solutions from Amphenol.



HPCE® Mezzanine Connector

The HPCE® Mezzanine is a next-generation power board-to-board for demanding applications requiring variable stack heights and high linear current density. It offers both receptacle and recommended PCB Bridge. Both are based on very cost-effective and highly reliable stamped-and-formed power contact technology similar to other power solutions from Amphenol.



HVBI

HVBI specially designed for high power EV & Energy Storage, with ruggedized design, convenient push-pull operation in limited space, robust metal shells with excellent electromagnetism shielding, potting design for backshell provide excellent anti-vibration and waterproof performance, has a wide range of current from 60A to 250A. UL and TUV Certification.



HVCO COMBO

HVCO COMBO connectors are all compliant with IEC 62196-2, IEC 62196-3 standards.



HVCO IEC

HVCO IEC connectors are all compliant with IEC 62196-2, IEC 61851-1 standards.



HVCO SAE COMBO

HVCO COMBO connectors are all compliant with IEC 62196-2, IEC 62196-3 standards.



HVDC

HVDC is a low mating force, high mating cycle connector that achieves enhanced performance due to multiple points of contact vs. standard 2 or 4 tine contacts. Weight savings with a composite shell and hollow pin design threaded or lug termination. Temperature rating: 180°C. Current Rating: 365 Amps



HV/EV Connectors and Components China / Asia

Complete interconnect solutions for all High Voltage Devices for Electric and Hybrid Electric drivetrain and electric power connections inside of HV applications including Charge Inlets, OBC, EV Battery, Inverters, e-motors, and AUX devices.



HVSL1000

HVSL1000 offers a rated current of 250A Max and a rated voltage up to 1000V. It is perfectly suitable for EV applications such as power solutions. External HVIL: 1 position / Internal HVIL: 2 to 3 positions. / EMI / Compliant with LV215, USCAR-2, USCAR-37, ROHS / IP68 (mated), IP6K9K / Touch-proof / Multiple coding positions / 25 to 70mm² shielded wire.



HVSL1200

HVSL1200 is the latest generation of the Excel|Mate series. The RADSOK® Technology R4 version 10mm and an interlock solution ensure a safe and reliable connection. 2 position / Rated voltage: 1000V / Rated current: 350A / EMI / Compliant with LV215, USCAR-2, USCAR-37, ROHS/ IP68 (mated), IP6K9K / Touch-proof / Multiple coding positions / 70 to 95mm² shielded wire



HVSL633

HVSL633 is a 3 positions connector, which offers a range of current from 23A to 40A and a 4 to 6mm² crimping. It was specially designed for DC-DC, air-conditioner, and other EV equipment and devices. Internal HVIL / IP68 (mated), IP6K9K / Touch-proof / Rated voltage: 800V DC / Rated current: 23 to 40A / Multiple coding positions / 4 to 6mm² shielded wire.



HVSLS800

HVSLS800 is a 2 pins metal connector, which provides a rated current of 180A and a 35 to 50mm² crimping cable. It was specially designed for inverters, junction boxes, power distribution boxes, and other EV equipment and devices. Internal HVIL / IP68 (mated), IP6K9K / Touch-proof / Multiple coding positions / No tool required to unmate / 35 to 50mm² crimping cable.



HVSP

HVSP series is a high voltage small size plastic connector, it has rotation and polarization integration, can be used in energy storage. Rated current from 100A to 250A. It's a prime solution for limited space and cost. IP67, IP6K9K.



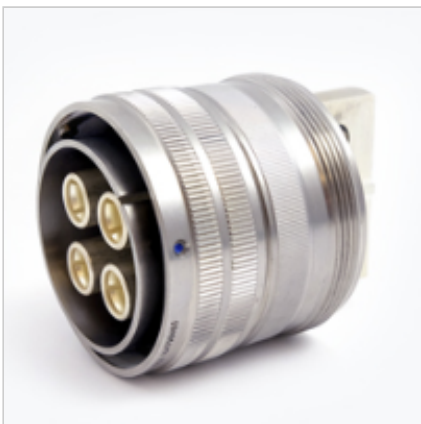
Infinity

High power interface with a wide variety of features providing solutions for system design challenges created by increasing power consumption.



Metral® Power & Coax

FCI Basics Metral® power, high power, and coax connectors are standalone modules, end-to-end stackable with Metral® signal modules. The connectors are designed in accordance with IEC 61076-4-104 and Telcordia GR-1217-CORE. Metral® power, high power, and coax connectors support power solution with a current rating of 3 to 40A for each pin. They are available in 4 and 5-row versions.



MGT-5015 Reverse Bayonet Coupling

An expansion of the GT-5015 series, offering a rugged environment connector in new finishes such as Durmalon and Black Zinc Nickel for military applications. Termination options include crimp, solder, PC tail, threaded, or custom-designed bus bars. Upgraded socket contacts include the RADSOK and Temper-Grip socket contacts, which carries more current than a standard contact at higher temperatures.



Micro Power 3.0

Micro Power 3.0 connector system is a 3.00mm pitch power connector designed for wire-to-board applications. It is mainly used for power applications and supports a current rating up to 6.5A per pin and a wire gauge range from 30AWG-20AWG. It is available in 2 to 24 circuits for dual rows and 2 to 12 circuits for a single row. Scoop-proof housings prevent mismating between header and receptacle.



Micro Power Plus 3.0

Micro Power Plus 3.0 connector system, is a 3.00mm pitch power connector designed for wire-to-board applications. It is mainly used for power applications and supports a current rating of up to 12.5A per pin and wire gauge range from 30AWG-16AWG. It is available in 2 to 24 circuits for dual row and 2 to 12 circuits for single rows.



Micro Power Super

Micro Power Super series is a 3.00mm pitch power connector designed for flexible wire-to-board applications, based on different wire gauges and circuits. It provides a maximum current rating of 17A/pin and accommodates a wire gauge of 16AWG and 15AWG. It is foolproof against mismatching among different circuits. This series is available for 2 to 24 circuits for dual rows.



MIL-DTL-5015 (Matrix)

This crimp, rear-release high-power series provides an improved alternative to the older MIL-C-5015 solder type. It bridges the gap between an old connector standard and the environmental and high-performance needs of current technologies.



Millipacs® Power & Hybrid Connectors

FCI Basics Millipacs® is a 2.00mm modular board to board or cable to board Interconnection system in Hardmetric configuration designed in accordance with IEC 917 and IEC 61076-4- 101. FCI Basics offers Millipacs® Hard Metric Hybrid connectors in standard signal modules of type L, M, N, D, E with signal pins, integrated guide pins, and power/coax contacts.



Mini Power 4.2

Mini Power 4.2 connector system is a 4.20mm pitch power connector designed for wire-to-board applications. It is mainly used for power applications and supports a current rating up to 9A per pin and wire gauge range from 28AWG-16AWG. It is available in 2 to 24 circuits for dual row. The boardlock option ensures a strong retention force.



Mini Power Plus 4.2

Mini Power Plus 4.2 connector system is a 4.20mm pitch power connector designed for wire-to-board applications. It is mainly used for power applications and supports a current rating of up to 13A per pin and a wire gauge range from 20AWG-16AWG. It is available in 2 to 24 circuits for dual row. The boardlock option ensures a strong retention force.



Mini Power Super

Mini power super series is a 4.20mm pitch power connector designed for flexible wire-to-board applications based on different wire gauges and circuits. It provides a maximum current rating of 20A/pin and accommodates a wire gauge of 16AWG and 14AWG. It is foolproof against mismatching among different circuits. This series is available in 2 to 24 circuits for dual row.



Minitex® Pwr 4.2 TPA Connector System

COMPREHENSIVE SOLUTION FOR POWER APPLICATIONS WITH TPA FCI Basics Minitex® Pwr 4.2 TPA connector system ensures that the terminal is fully seated in the housing and that the terminal will not back out of the housing during mating or when in use. APCI TPA aligners are optional and can be used as an add-on part.



Minitek® Pwr 5.7 Connector System

Minitek® Pwr 5.7 is a flexible and comprehensive solution for power application with a high current rating of up to 23A per contact and wire gauge range from 16-12AWG for wire-to-board application. Minitek® Pwr 5.7 features polarized mating geometry, this helps to prevent mismating. It offers a wide operating temperature, ranging from -40°C to 105°C, making it suitable for a range of applications.



MVC Medium Voltage Connector

MVC is a rugged Medium Voltage connector coupler optimal for mining, construction, or Oil and Gas market. MVC 600V, 8KV, or 15KV cable couplers use the patented RADSOK technology increasing the current 20 to 30% compared to std contacts.



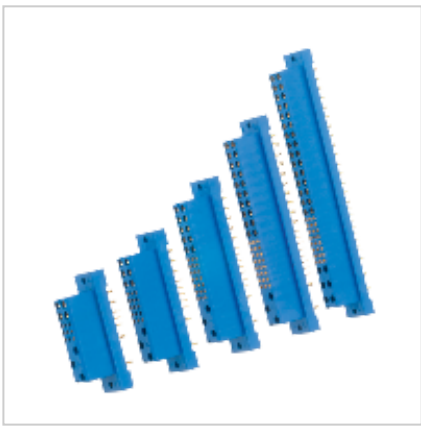
MW Power Connectors

MW series power connectors are MIL Qualified and listed in QPL. They meet the requirement of MIL-DTL-55181. MW series power connectors are designed with a center lock coupling screw. They are waterproof, polarized, and can withstand high shock and vibrations. They are primarily used for the interconnection of power and control circuits of electric equipment military communication systems.



Neptune

NEPTUNE® is an IEC and UL® Listed amperage ratings include 30A, 60A, 100A, 150A, and 200A options, with 3, 4, and 5 contact options available. NEPTUNE series is a major improvement over the existing power connectors used in the market today. NEPTUNE offers a significant weight, space, and mounting footprint reduction over our competition.



PCI

The Compact Power connector series was developed with the PCI Industrial Computer Manufacturers Group (PICMG) as the power interface for plug-in power supplies or other chassis mount applications. It delivers high current through a small package and three levels of sequential mating.



PCS

The PCS Series are versatile, high-current, mixed density connectors with low contact resistance. It remains an industry-leading power connector in the market. Options for one, two, or three contact rows provide flexibility in selection and high conductivity contacts are available to maximize current density. Other options - sequential mating, integrated locking latch, and press-fit contacts.



Power Card Edge

The Power Card Edge connectors are a cost-effective system that can be used for DC power output from embedded AC/DC power supplies or for power distribution between boards within an enclosure. The narrow connector body helps maximize airflow for increased cooling and is well-suited for use in 1U rack-mount servers or on power distribution boards inside 1U redundant power supply assemblies.



Power Connectors

In design and conception, the Ecomate® program meets the high requirements for applications in industrial technology. Easy operation, reduced dimensions, and a more robust design are only a few of the features of the series. The connector's main area of application is in the fields of plant construction and machine building.



Power Distribution and Connection Terminals

AFTG has a wide range of passive components in switchboards. These are power distribution terminals such as terminal blocks, feed-in terminals, main branch terminals, stud terminals, easy connections boxes, grounding terminals, and screwless clamping terminals as well as bus bar steel terminals in different colors and cable cross-sections.



PowerSafe

PowerSafe MIL-DTL-38999 Series III is developed to transfer high power (500 V) in harsh environments, with full safety for the user.



PowerSafe as per VG96944

Circular connectors, TV of aluminum, stainless steel, marine bronze, approved as per MIL-DTL-38999 Series III. Versions available as power plugs from 250V to 500V, Powersafe, with pre-mated mass contacts.



POWERSOK

HV/HP connector for applications >60V. The POWERSOK family is grouped into different classes that define the resulting RADSOK and installation size. All connectors are equipped with a corresponding lock.



PwrBlade+® Cable Connectors

PwrBlade+® cable connectors offer flexibility to meet a wide variety of customer needs. The connectors come in both Cable-To-Cable and Cable-To-Board solutions. The PwrBlade+® cable provides a flexible, low-cost solution in applications such as telecommunication switches, high-end servers, and hot-swappable power supplies.



PwrBlade+® Cable Connectors for EV Charging

PwrBlade+® cable connectors offer flexibility to meet a wide variety of customer needs. The connectors come in both Cable-To-Cable and Cable-To-Board solutions. The available wire range is 10AWG-6AWG for high power, 16AWG-12AWG for low power, and 26AWG-22AWG for signal allowing users to select the appropriate connector to meet their application needs.



PwrBlade+® Connector

The PwrBlade+® connector is a next-generation AC/DC power distribution connector system for demanding applications requiring higher linear current density and low power loss. It is capable of 192A/linear inch with eight adjacent high power contacts energized simultaneously and 0.7m power contact resistance after environmental exposure.



Power Connectors



PwrBlade+® Connector for EV Charging

The PwrBlade+® connector is a next-generation AC/DC power distribution connector system for demanding applications requiring higher linear current density and low power loss. It is capable of 192A/linear inch with eight adjacent high power contacts energized simultaneously and 0.7m power contact resistance after environmental exposure.



PwrBlade® Connector

The PwrBlade® power distribution connector system from Amphenol includes power and signal contacts to provide power distribution and power control in a single connector. Options for either vertical or right-angle versions of PCB-mount headers and receptacles deliver support for coplanar, backplane, or mezzanine connections.



PwrBlade® ULTRA Connector System

PwrBlade® ULTRA is the addition to the PwrBlade® product line. This new design offers an overall height reduction of 24% to reduce airflow impedance in high-density power supplies. 3 contact choices are available; High & Low Power and Signal. Ultra-high conductivity materials and new highly conductive plating, combine to produce an ultra-low resistance of just 0.4mΩ at end-of-life conditions.



PwrBlade® ULTRA Connector System for EV Charging

The PwrBlade® ULTRA connector is the newest addition to the PwrBlade® product line. This new design offers an overall height reduction of 24% to reduce airflow impedance in high-density power supplies. Three contact choices are available; High Power, Low Power, and Signal.



PwrBlok® Connectors

PwrBlok® connectors provide a high current power interconnection with a quick connect/disconnect function for space-constrained board-to-board, board-to-busbar, and busbar-to-busbar power distribution applications.



PwrLoPro®

PwrLoPro® connectors are a family of board-to-board power connectors designed to deliver more current with lower profile height and less board space. This high-density and low-profile connector is developed to meet next-generation of 1U applications, telecommunications switches, high-end servers, and hot-pluggable power supplies.



PwrMAX® G2 Power Connector

PwrMAX® G2 is the highest density blind-mate power and signal connector available. PwrMAX® G2 series carries up to 100A per contact and features design improvements to reduce board space depth, while also improving the blind mate gatherability. The depth on board has been reduced from 32.4mm to 27.4mm with an overall space savings of 18%.



PwrMAX® Ortho Power Connector

100 A ORTHOGONAL APPLICATION POWER CONNECTOR The PwrMAX® Ortho power connector offers a compact means for connecting up to 100A DC power in a PCB edge-to-PCB edge application. The blind mate connector offers low resistance to satisfy modern orthogonal systems architectures.



PwrMAX® Power Connector

HIGH-DENSITY POWER AND SIGNAL CONNECTOR SYSTEM The PwrMAX® connector family offers a compact means for connecting up to 100A DC power in modern system architectures requiring high density and high current. Configurations include coplanar, backplane, mezzanine, and orthogonal.



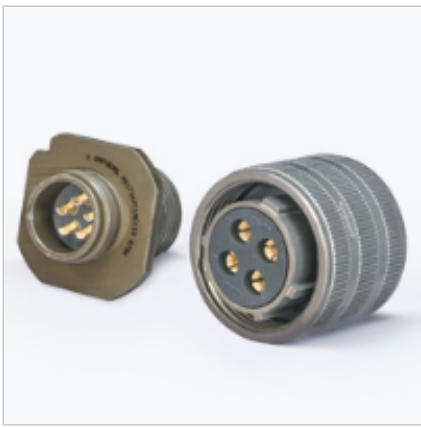
Pwr Profile+®

LOW PROFILE, HIGH CURRENT DENSITY CABLE ASSEMBLY Pwr Profile+® I/O addresses applications requiring additional power density in space-constrained, chassis-based equipment platforms. The innovative power contact design has a lower profile for cable-to-board applications.



Pwr Profile®

LOW PROFILE, HIGH CURRENT DENSITY CABLE ASSEMBLY Pwr Profile® I/O addresses applications requiring additional power density in space-constrained, chassis-based equipment platforms. The innovative power contact design has a lower profile for cable-to-board applications.



QWL Connectors

QWL Series Connectors are tailor-made for compact, heavy-duty industrial use. The outstanding performance of this series makes it well suited for shipboard installations and ground support power distribution applications where physical strength and dependability are key requirements. The QWL Series is a versatile, economical alternative to military qualified designs.



QWLD Connectors

QWLD Series heavy-duty cylindrical connectors provide reliable power and control functions in hostile environments where ordinary connectors cannot survive. Water and explosion-proof, resistant to abrasion, corrosion, vibration, and shock. Double stub threads for fast coupling. Over 300 industrial and MS-approved insert patterns are available, including coaxial and thermocouple contacts.



R49 & R24 Rubber Series

The R49/R24 series are single-pole high load connectors manufactured in market-leading synthetic self-lubricating thermoset rubber. The design enables the quick, safe and secure connection of AC and DC power in the most demanding of environments. Housings and couplers and manufactured in high-grade aluminum and feature snap action 'vibration safe' locking mechanisms.



RADSOK R8S

HV/HP contact with a new design. Asymmetric socket contact for Automotive and Industrial applications. Several connection possibilities and sizes are available. Produced by a precision and price optimized stamping and bending process.



RADSOK® | High Power Connectors

Electric and electronic applications require increasingly more energy. Traditional connection technologies are often not able to fulfill these requirements. Amphenol offers RADSOK - a new generation of high-power contacts. The hyperbolic contact geometry offers many advantages such as contact coverage of up to 65%, absorption of vibrations as well as superior durability of the contact element.



Raptor

RAPTOR is Amphenol LTD's new range of high-power, high voltage connectors for e-Flight e-Vtol and Hybrid applications. It provides PDIV free performance at an operating voltage of 2.0KV AC(RMS) at 35,000 ft making it ideal for Batteries, Generators, Motors & Power Distribution. The operating temperature is 200°C using the new TALON contact with a current-carrying capacity of up to 800A.



Raptor Feedthrough

The RAPTOR Feedthrough is engineered for High Voltage and High Current Systems in e-flight, e-VTOL, and Hybrid applications such as batteries, generators, motors & power distribution units and is ideal for the termination of screened power cables. It is designed for applications where once the equipment is installed, it does not require frequent connection and disconnection.



Rhino

RHINO combines the benefits of field-proven MIL-DTL-38999 Series III circular connectors with low resistance hyperbolic RADSOK® power contacts. RHINO is designed to meet the latest military and industrial specifications and is intended to satisfy market requirements for high power & voltage applications in harsh environment conditions.



Rig-Power

Rig-Power Single Pole connectors are the standard of the industry for top drive interconnects. Featuring RADSOK® high amperage contact technology which uses the high tensile strength properties of a stamped and formed, high conductivity alloy grid to produce low insertion forces while maintaining a large conductive surface area.



Scorpion Modular

Design your own connector with our Scorpion series! The Scorpion modular connector can be configured as a power connector, a signal connector, or both, and it offers nearly limitless combinations. Perfect to achieve that ideal blend of size, weight, and power (SWaP). Add options for blind mating, float mount, panel mount, and cable connector options, as well as integral locking systems.



SheerPwr® Circular Connector

SheerPwr® Circular is a high-current, low-resistance interface, designed for applications connecting busbars-to-busbars/boards & BTB. It uses a robust and compliant power contact, assembled in a circular orientation. This forms a power socket, designed to mate with traditional machined pins, which provides repeated low resistance, high misalignment tolerance & high current carrying capabilities.



SMARTSOK

HP connector for applications <60V with smart connection systems. Due to its optimized design, the SMARTSOK connectors can be installed quickly and easily. If necessary the connection can be locked by various solutions.



SOFIX® Power Connectors

The SOFIX® front I/O interconnect system is comprised of right-angle headers and cable plugs that are suitable for the distribution of power and signals. The design rules for the SOFIX® family of I/O connectors are derived from the Metral® system (IEC 61076-4-104). The SOFIX® system can be used as a complement to the Metral® backplane connector family or applied as dedicated I/O solution.



SOFIX® Right Angle Board Headers

SOFIX® is a front IO interconnection system comprised of Right Angle headers and cable plugs, suitable for the distribution of power or signal. The design rules for the SOFIX® family of I/O connectors are derived from the Metral® system (IEC 61076-104). The SOFIX® system can be used as a complement to the Metral® backplane connector family or applied as a dedicated I/O solution.



SOFIX® Shielded Cable Connectors

SOFIX® is a front IO interconnection system comprised of Right Angle headers and cable plugs, suitable for the distribution of power or signal. The design rules for the SOFIX® family of I/O connectors are derived from the Metral system (IEC 61076-104). As such, the SOFIX® system can be used as a complement to the Metral® backplane connector family or applied as a dedicated I/O solution.



SP Max

The SP Max is specifically designed for power and signal management in military, space, satellite, and commercial air applications. Its slim precision machined shell is available in three sizes with four contact sizes and twenty-one layout options available for versatility.



SurLok Plus™

This series, a field installable compression lug utilizing RADSOK® socket contact technology, ruggedized harsh environment, thermoplastic housing, metal lug, press-fit high power connector. With a single pole arrangement ranging from 3.6mm to 14mm and up to 500 amps possible with a standard operating temperature from -40°C to +105°C.



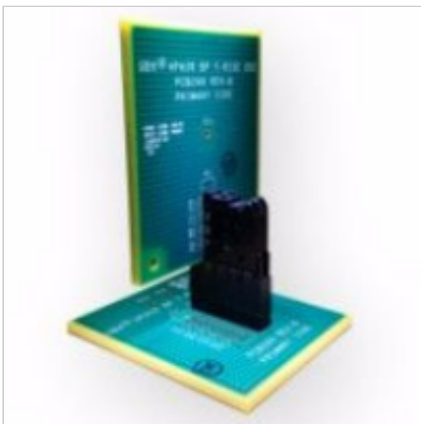
UPC

UPC (Universal Power Connector) is a plastic power connector series specially designed to be used in the hybrid electric vehicle market. The 2-pole and 3-pole connectors incorporate patented RADSOK® technology for higher amperage. The compact, plastic shell structure is lightweight with a small footprint, has continuous power up to 400A, and is field installable and repairable.



UPC Connectors

This series, utilizing RADSOK® socket contact, HVIL contact, and EMI shielding technologies is a ruggedized harsh environment, high power, thermoplastic rectangular connector with lever coupling and CPA (Connector Position Assurance) lock. With two or three contacts per connector and up to 450 amps possible with a standard operating temperature from -40°C to +125°C.



XCede® Power Connectors

XCede® connector platform is designed to provide headroom for high-speed, serial data rates demanded by data centers and service provider networks. The use of polymers in a resonance-damping shield enables low crosstalk across a wide frequency range. The XCede® backplane header system provides the ruggedness and long-term reliability required by today's systems.

Алматы (7273)495-231
Ангарск (3955)60-70-56
Архангельск (8182)63-90-72
Астрахань (8512)99-46-04
Барнаул (3852)73-04-60
Белгород (4722)40-23-64
Благовещенск (4162)22-76-07
Брянск (4832)59-03-52
Владивосток (423)249-28-31
Владикавказ (8672)28-90-48
Владимир (4922)49-43-18
Волгоград (844)278-03-48
Вологда (8172)26-41-59
Воронеж (473)204-51-73
Екатеринбург (343)384-55-89

Иваново (4932)77-34-06
Ижевск (3412)26-03-58
Иркутск (395)279-98-46
Казань (843)206-01-48
Калининград (4012)72-03-81
Калуга (4842)92-23-67
Кемерово (3842)65-04-62
Киров (8332)68-02-04
Коломна (4966)23-41-49
Кострома (4942)77-07-48
Краснодар (861)203-40-90
Красноярск (391)204-63-61
Курск (4712)77-13-04
Курган (3522)50-90-47
Липецк (4742)52-20-81

Магнитогорск (3519)55-03-13
Москва (495)268-04-70
Мурманск (8152)59-64-93
Набережные Челны (8552)20-53-41
Нижний Новгород (831)429-08-12
Новокузнецк (3843)20-46-81
Ноябрьск (3496)41-32-12
Новосибирск (383)227-86-73
Омск (3812)21-46-40
Орел (4862)44-53-42
Оренбург (3532)37-68-04
Пенза (8412)22-31-16
Петрозаводск (8142)55-98-37
Псков (8112)59-10-37
Пермь (342)205-81-47

Ростов-на-Дону (863)308-18-15
Рязань (4912)46-61-64
Самара (846)206-03-16
Санкт-Петербург (812)309-46-40
Саратов (845)249-38-78
Севастополь (8692)22-31-93
Саранск (8342)22-96-24
Симферополь (3652)67-13-56
Смоленск (4812)29-41-54
Сочи (862)225-72-31
Ставрополь (8652)20-65-13
Сургут (3462)77-98-35
Сыктывкар (8212)25-95-17
Тамбов (4752)50-40-97
Тверь (4822)63-31-35

Тольятти (8482)63-91-07
Томск (3822)98-41-53
Тула (4872)33-79-87
Тюмень (3452)66-21-18
Ульяновск (8422)24-23-59
Улан-Удэ (3012)59-97-51
Уфа (347)229-48-12
Хабаровск (4212)92-98-04
Чебоксары (8352)28-53-07
Челябинск (351)202-03-61
Череповец (8202)49-02-64
Чита (3022)38-34-83
Якутск (4112)23-90-97
Ярославль (4852)69-52-93