

Алматы (7273)495-231
Ангарск (3955)60-70-56
Архангельск (8182)63-90-72
Астрахань (8512)99-46-04
Барнаул (3852)73-04-60
Белгород (4722)40-23-64
Благовещенск (4162)22-76-07
Брянск (4832)59-03-52
Владивосток (423)249-28-31
Владикавказ (8672)28-90-48
Владимир (4922)49-43-18
Волгоград (844)278-03-48
Вологда (8172)26-41-59
Воронеж (473)204-51-73
Екатеринбург (343)384-55-89

Иваново (4932)77-34-06
Ижевск (3412)26-03-58
Иркутск (395)279-98-46
Казань (843)206-01-48
Калининград (4012)72-03-81
Калуга (4842)92-23-67
Кемерово (3842)65-04-62
Киров (8332)68-02-04
Коломна (4966)23-41-49
Кострома (4942)77-07-48
Краснодар (861)203-40-90
Красноярск (391)204-63-61
Курск (4712)77-13-04
Курган (3522)50-90-47
Липецк (4742)52-20-81

Магнитогорск (3519)55-03-13
Москва (495)268-04-70
Мурманск (8152)59-64-93
Набережные Челны (8552)20-53-41
Нижний Новгород (831)429-08-12
Новокузнецк (3843)20-46-81
Ноябрьск (3496)41-32-12
Новосибирск (383)227-86-73
Омск (3812)21-46-40
Орел (4862)44-53-42
Оренбург (3532)37-68-04
Пенза (8412)22-31-16
Петрозаводск (8142)55-98-37
Псков (8112)59-10-37
Пермь (342)205-81-47

Ростов-на-Дону (863)308-18-15
Рязань (4912)46-61-64
Самара (846)206-03-16
Санкт-Петербург (812)309-46-40
Саратов (845)249-38-78
Севастополь (8692)22-31-93
Саранск (8342)22-96-24
Симферополь (3652)67-13-56
Смоленск (4812)29-41-54
Сочи (862)225-72-31
Ставрополь (8652)20-65-13
Сургут (3462)77-98-35
Сыктывкар (8212)25-95-17
Тамбов (4752)50-40-97
Тверь (4822)63-31-35

Тольятти (8482)63-91-07
Томск (3822)98-41-53
Тула (4872)33-79-87
Тюмень (3452)66-21-18
Ульяновск (8422)24-23-59
Улан-Удэ (3012)59-97-51
Уфа (347)229-48-12
Хабаровск (4212)92-98-04
Чебоксары (8352)28-53-07
Челябинск (351)202-03-61
Череповец (8202)49-02-64
Чита (3022)38-34-83
Якутск (4112)23-90-97
Ярославль (4852)69-52-93

Россия +7(495)268-04-70

Казахстан +7(7172)727-132

Киргизия +996(312)96-26-47

<https://amphenol.nt-rt.ru/> || aox@nt-rt.ru

Amphenol

Junction Modules/Relay Sockets/Terminal Blocks



1100 Modules

The Amphenol Air LB France's 1100 series consists of Quick junction modules for signal and low current distribution, where sealing, space and weight-saving are prime requirements. Suited for wiring optimization, then offering weight and cost savings, these track-mounted modules (on metallic track) are available from 6 contacts size 12 up to 21 contacts size 22 in different contact configurations.



1119 Series Mil/Aero In-Line Junctions

In-line junctions 1119 series are available in 1 to 4 contacts versions, for copper or alu cable contacts (also exist in components carrier versions for diodes, resistors, or fuses inserted). These Amphenol Air LB France's splices are sealed, compact, thin, and easy to use. Perfectly suited in a cable harness, easily insert a component and change a signal, or simply to repair a damaged wire.



1119 Series Railway In-Line Junctions

In-line junctions 1119 series are available in 1 to 4 contacts versions, for copper cable contacts, and also exist in components carrier versions (diodes, resistors, or fuses inserted). These Amphenol Air LB France's splices are fully sealed, compact, thin, and easy to use. Perfectly suited in a cable harness, to easily insert a component and change a signal, or simply to repair a damaged wire.



1174 Circular Grounding Modules

Grounding modules for signal and low current distribution, where sealing (IP66 / IP68 and IP69K), space and weight-saving are prime requirements, these Amphenol Air LB France's modules are suited for grounding applications. Including components or not, they can be screwed directly on the structure. Available for 10 or 12 contacts size 20, male or female contacts, with or without components.



1200 Modules

Derived from the 1100 series, the Amphenol Air LB France's Junction modules 1200 series are conform to the ABS1569 standard. Suitable for aircraft and military applications. Modules are mounted on tracks. Different contact arrangements are available per contact size. Specially designed for microcurrents applications (modules to be fitted with female crimp contacts).



1750 Modules

The Amphenol Air LB France's 1750 series consists of Quick junction modules for signal and low current distribution, where sealing, space and weight-saving are prime requirements. Suited for wiring optimization, then offering weight and cost savings, these track-mounted modules (on metallic or composite track) are available in different contact configurations (size 12 to 22).



1758 Ground Modules

The Amphenol Air LB France's grounding modules are suited for signal and low current distribution, where sealing, space and weight-saving are prime requirements. Specifically suited for wiring optimization, while offering weight and cost savings, these modules come with individual mounting brackets or can be mounted on metallic tracks. Available from 36 contacts size 22 to 8 contacts size 12.



1765 Electronic Component Carrying Modules

Derived from the 1750 series, the Amphenol Air LB France's 1765 modules series consists of components carrier versions that can be fitted with diodes, resistors, fuses, etc. Perfectly suited in a cable harness to easily insert a component. They offer a perfect sealing (IP66 / IP68 and IP69K), space and weight-saving. Mounting on composite or metallic tracks.



1777 Modules

The Amphenol Air LB France's 1777 series consists of Quick junction modules for signal and low current distribution, where sealing, space and weight-saving are prime requirements. Suited for wiring optimization, then offering weight and cost savings, these track-mounted modules (on metallic or composite track) are available in different contact configurations (size 12 to 20).



3240 / 3242 Monoblock assemblies

Designed for power distribution purposes, the Amphenol Air LB France's monoblock assemblies are made of terminal junction block, for copper or aluminum cable connections. They are available with individual or shunted terminals, from 1 to 12 terminals, in different diameters. The protective cover fixing, as well as the terminal assembly's fixing on structure are ensured by pillar bolts.



Adaptor Device for Fuse, Lights or Switch

Adaptation device between a Fuse, a Light or a switch and a Cable harness, these Amphenol Air LB France's sockets are widely used by European aircraft and helicopters manufacturers.



AHQ & AKE & AMI & AWH - General Relay

General Relay highly adapts to conditions with high temperature and vibration. Miniature size with low power consumption. Halogen-Free series are available.



AM & AL - Industrial Relay

AL & AM is available in a variety of contact forms and load specifications, and LED lights indicate the operational status of coil on or off. It is suitable for debugging personnel to test the circuit manually.



ASNE Relay Sockets

Adaptation device between a Relay and a Cable harness, these Amphenol Air LB France's ASNE relay sockets are widely used by European aircraft manufacturers. They offer sealing and polarization provided by specific contact configurations or polarized mounting devices. Available 8, 14 or 16 contacts size 20 / 16 (ASNE crimp contacts)



AX Series

The revolutionary mini accessories with 3 entrances, pre-filled with gel, and suitable for submersible installations(IPX8). Designed in 3 dimensions to rapidly insulate and seal the most commonly used connectors.



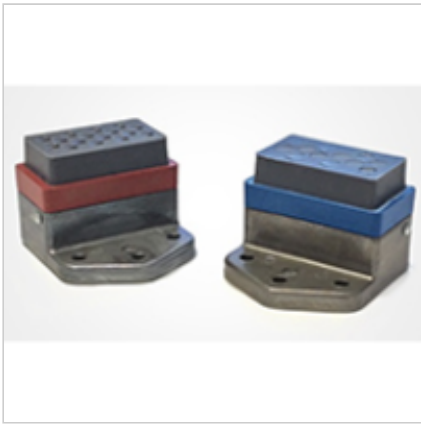
Barrier Terminal Block

In structure, they comprise panel feed-through type, baffle type, and pluggable type, and can connect all kinds of conducting wires whose cross-sections are 0.32mm² to 53.5mm². The spacing between 7.62mm and 11mm can be selected. It can provide covered or uncovered styles. Product design in line with IEC60998, UL1059, CSA C22.2 No.158, and other international standards.



Distribution Module 2759

Distribution module with 6 crimp Twinax contacts for military aircraft and helicopters. Twinax contacts are available for various cable types.



Ground Blocks

Ground Blocks provide the lightest weight, highest density grounding solutions. Wired connections are environmentally-sealed, providing protection from moisture, spray, and debris. Unused connections are protected via Amphenol Pcd's patented FODSeal Technology, which replaces the sealing plugs - reducing FOD, weight, and part count.



Header for Pluggable System

This series is pluggable terminal blocks that match with screw clamp plugs or spring clamp plugs, which can be made into different combinations and are also provided with 2 main advantages of simple maintenance and reliable connection in design.



Industrial/Audio Relay Sockets

Low-cost, high-quality solution for customers looking to maximize the life cycle of their existing product architectures. Industrial/Audio Relay Sockets meet existing dimensional and performance specifications for standard 8,9 and 11 pin sockets. Additional styles, such as shielded or screw termination DIN rail mount available on demand.



Industrial Terminal Blocks

Terminal Blocks include a broad range of fixed-mount and pluggable European cage clamp, U.S.-style screw clamp and spring clamp style wire-to-board and wire-to-wire blocks and related headers in .098" to .591" centers



Junction Modules/Electronic Modules

Series I Terminal Junction Modules and Series II Socket Junction Modules are robust, reliable, and perform to M81714 electrical and mechanical standards. Series I uses standard M39029/1 pin contacts. Series II uses M39029/22 socket contacts. Both accommodate 12-26 AWG wires. Mounting rail and installation/termination accessories and customization available.



Lightweight Ground Modules

New, lightweight grounding modules are suitable for a wide variety of military and airframe power distribution and grounding system applications. A convenient footprint for mounting on airframe or vehicle frames. High altitude operating specifications, low outgassing, and a high degree of salt spray resistance make the modules suitable for space & near-space applications.



M81714-Style Electronic Splices and Modules

M81714 Style Splices/Electronic Splices are designed to provide a quick and efficient solution to application design wiring requirements and are highly resistant to temperature and fluids. Supplied with a wide variety of diodes, resistors, capacitors, and fuses. These solutions allow customers to incorporate system modifications into a wire bundle, avoiding changes in panels or boards.



N2 Series

N2 series connectors are used in the lighting industry. The handle is easy to operate, convenient, and quick wiring, suitable for the connection of 0.2-4mm² solid wire or 0.2-2.5mm² multi-strand wire.



N3 Series

N3 series terminal with easy operation handle design can realize fast connection and maintenance. It can be connected with a solid wire of 0.14~4mm² and multi-strand wire of 0.2~4mm², and the current is up to 32A.



N5 Series

N5 series direct plug type quick connection terminal, suitable for single hard wire direct plug connection, easy and efficient operation. The products can be used in lighting line connection, household and factory small power line temporary wiring, and other fields.



NFC 93422 HE310A Relay Sockets

Adaptation device between a Relay and a Cable harness, these Amphenol Air LB France's NFC type relay sockets are widely used by European aircraft manufacturers. They offer sealing and polarization provided by specific contact configurations or polarized mounting devices. Available 8, 14 or 16 cts size 20 / 16 (crimp contacts as per NFC 93422 model HE310A contacts)



NQ - SMT Type Terminal Block For LED Lighting

NQ adopts a compact design, which is space-saving. It can be used to connect LED strip lights.



NR & NL - Spring Clamp Pluggable Terminal Blocks

NR & NL has been optimized for small installation space conditions, with double wire connections and compact structure, and with an operating lever for fast connection. Pluggable connection design, easy maintenance.



NU & NS - Pin-Plugs Pluggable Terminal Blocks

NR & NL adopts a compact design and uses push-in connection technology for solid wire. They are applied to smart home controllers.



NZ - High Current Spring Clamp Terminal Block

NZ adopts spring-cage technology, the patented structure design could buffer the impact of lever operation, and the wiring is convenient and fast. There are with jumper slot type and without jumper slot type for your option.



Pin-Plugs Pluggable System

This series is economical pluggable PCB terminal blocks, and with simple construction. They can connect conducting wires whose cross-sections are 0.08mm² to 3.3mm². The pitches are available at 3.5mm to 8.0mm. Product design in line with IEC60947-7-1, IEC60998-2-1, IEC60999-1, UL1059, CSA C22.2 No.158 and other international standards.



Quick Mount Relay Sockets

Quick Mount Relay Sockets snap mount into standard aircraft panel cutouts and eliminate all socket-to-bulkhead mounting hardware. Simplifying installation, reducing weight, and installation cost. Sockets meet the applicable performance and dimensional requirements of M12883 and are compatible with Mil-Spec approved relays from any manufacture.



Relay Sockets

Adaptation device between a Relay and a Cable harness, our relay sockets are widely used by European aircraft manufacturers.



Rising Clamp System

This series is practical PCB terminal blocks that utilize the rising principle of metal housing and are also provided with two main features of compact construction and firm connection in design. Conductors with cross-sections from 0.08mm² to 35mm² can be connected, with spacing from 2.54mm to 15.0mm available. Product design in line with IEC/EN60998, IEC/EN60947, UL1059, CSA C22.2 No.158, etc.



RMT Relay Sockets

Adaptation device between a Relay and a Cable harness (fast-on tabs connection), the Amphenol Air LB France's RMT relay sockets (H400 & H600 models) are widely used by European train manufacturers and signaling equipments manufacturers. Also available: clamping carrier blocks (for Diodes)



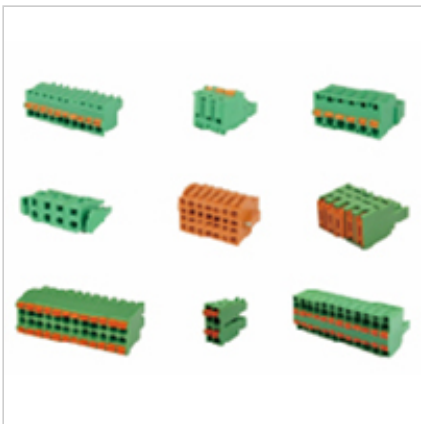
RMT Relay Sockets in A.R.C Material

Adaptation device between a Relay and a Cable harness (fast-on tabs connection), this Amphenol Air LB France's range of Relay sockets (H400 & H600 models) are in A.R.C material (Amphenol Rail Compound), a new material specifically designed to meet or exceed the most demanding international exigencies in the field of Rail & Mass transit, and perfectly suited for Cold environment applications.



Screw Clamp Plugs for Pluggable System

This series of lock screw plugs can provide shrapnel type and lift type two choices, according to the need to optimize the selection of screwdriver operation direction and wiring direction.



Spring Clamp Plugs for Pluggable System

This series of lock-free screw plugs has the characteristics of anti-vibration, reliable clamping, easy wiring operation, can be quickly connected to the wire.



Spring Clamp System

This series has two connection methods: spring-cage connection and push-in spring connection. They have the features of anti-vibration, simple wiring operation, and compact construction. Product design in line with IEC/EN60998, IEC/EN60947-7-4, UL1059, CSA C2.22 No.158, and other international standards.



Terminal Block Accessories

Currently, the coding keys applicable to the pluggable system, handles, and wiring tools are available.



Wire Protector System

This series is economical PCB terminal blocks, which mainly take 2P/3P as the base pole and can be combined into any desired pole according to customers' requirements. With anti-vibration characteristics, flexible and convenient connection mode. Space 2.50mm-10.16mm, product design in line with IEC/EN60998, IEC/EN60947-7-4, UL1059, CSA C2.22 No.158, and other international standards.



YK50B & YK44B - Barrier Terminal Blocks

YK50B & YK44B are designed with nuts with greater screw torque and prevent torsion from reaching the terminal when screwing. The structure is simple and firm, and the connection is safe and reliable.



Zeus Din-Rail 7KV & 5KV

Zeus series is a High voltage Din-Rail Connector that can be used as a high voltage terminal block. 5KV or 7KV Available in 2 or 3 contacts versions. Snap-in RADSOK Contact technology for 6AWG, 8AWG, and 12AWG. The connector is designed with Creepage/Clearance in accordance with 5KV IEC60079-7 guidance



ZTC & ZBC - High Current Teriminal

Large current terminals have the advantages of simple structure, convenient installation, intuitive connection, more solid and reliable, and can be used as large current wiring of various electrical devices.